

# TableTop Guide

**NEW!**  
SHOP TOP



## Best Suited For

CTE

STEM

MAKERSPACES

ART

Designed to handle the toughest projects, the Shop Top combines a 1.5" high-density fiberboard surface with a plywood core for exceptional strength. A UV-coated finish enhances durability and wear resistance, making it a reliable, long-term solution for active shop and classroom spaces. While not marketed as chemically resistant, our UV-coated butcher block tops have been tested under SEFA chemical resistance guidelines and remained within allowable performance limits for the chemicals tested.

\*See page 10 for SEFA testing results\*

Chemical  
Resistant

Durable

Heat  
Resistant

Scratch\*  
Resistant

\*See pg 10\*

X

X



## Best Suited For

CTE

STEM

MAKERSPACES

CLASSROOMS

COMMON AREAS

ART

MEDIA CENTERS



BUTCHER  
BLOCK

Our 1.5" UV coated Butcher Block Tops offer a durable, high-quality work surface crafted from solid hardwood. Available in Maple, Walnut, or Mixed (Walnut/Maple), these tops provide strength, stability, and a classic aesthetic well-suited for shop, classroom, and workspace environments. While not marketed as chemically resistant, our UV-coated butcher block tops have been tested under SEFA chemical resistance guidelines and remained within allowable performance limits for the chemicals tested.

\*See page 10 for SEFA testing results\*

Chemical  
Resistant

Durable

Heat  
Resistant

Scratch\*  
Resistant

\*See pg 10\*

X

X



# TableTop Guide



CHEMICAL  
RESISTANT



## Best Suited For

CTE

Health Science  
Photography Labs  
Cosmetology  
Agriculture

SCIENCE

Biology  
Biochemistry  
Biophysics  
Medical Microbiology

Our Chemical Resistant Top is constructed from 1" compact laminate engineered for demanding environments. Flame retardant and tested against over 50 chemicals, this non-porous surface is designed to resist stains, impact, and both wet and dry heat. It also features anti-bacterial, anti-viral, and anti-fungal properties, making it an ideal solution for labs, classrooms, and technical workspaces.

\*See page 12-13 for chemical testing results\*

Chemical  
Resistant

Durable

Heat  
Resistant

Scratch\*  
Resistant

X

X

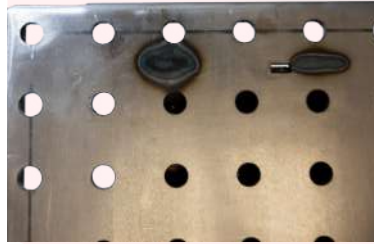
X

X



## Best Suited For

CTE WELDING CLASS



WELDING  
TOP

Designed for welding instruction, this 42W×60L×36H 2" raw steel tabletop offers durability, stability, and performance. Precision-cut holes enable secure use of pegs to hold materials in place, making it ideal for safe, hands-on classroom training. Ganging fasteners are included to connect tables for a larger work surface.

Chemical  
Resistant

Durable

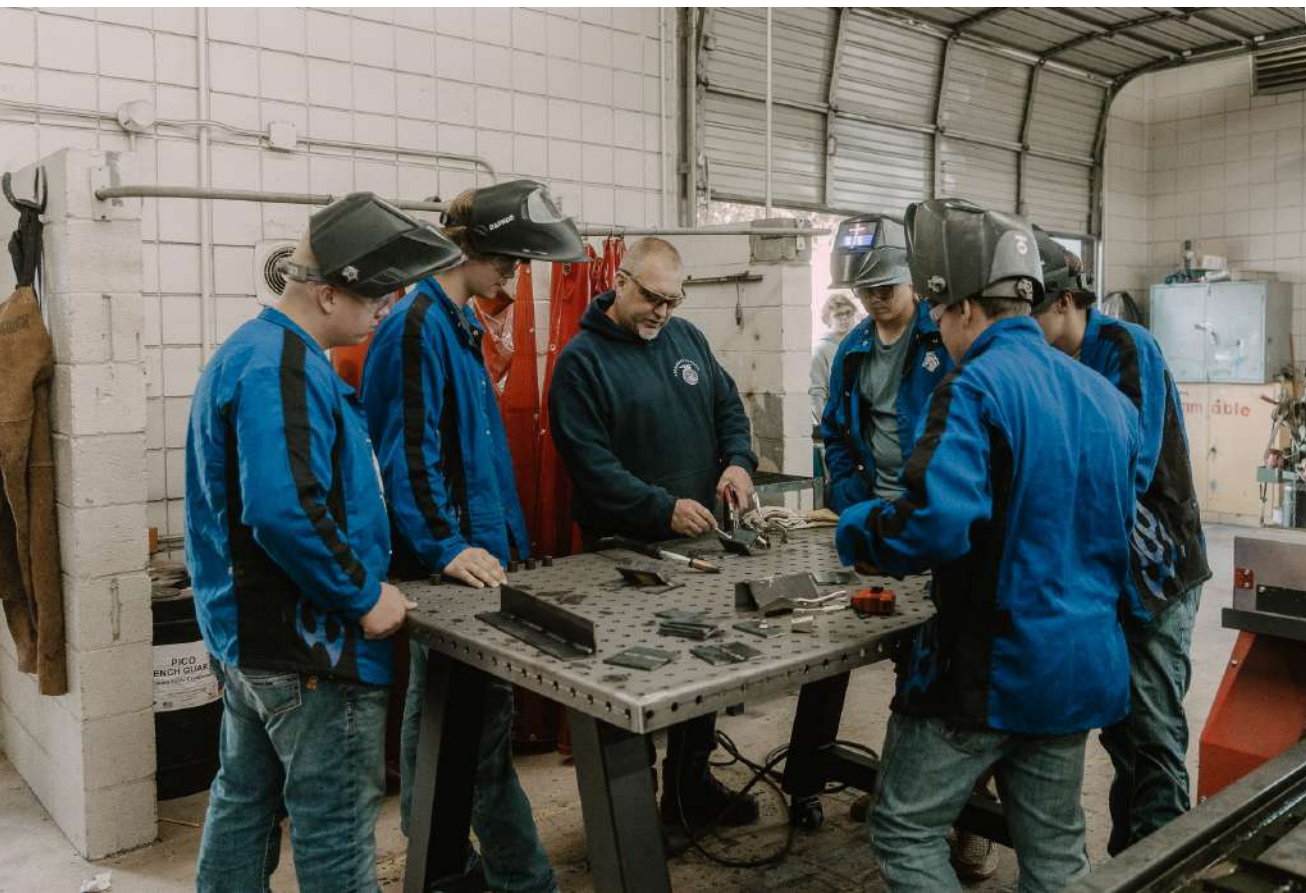
Heat  
Resistant

Scratch\*  
Resistant

X

X

X



# TableTop Guide

(304) FOOD  
GRADE  
STAINLESS  
STEEL



## Best Suited For

CTE

CULINARY

MAKERSPACES

STEM

SCIENCE

ART

Designed for performance and longevity, the 304 Food Grade Stainless Steel Top delivers exceptional durability in a sleek, professional finish.

Made from solid 304 stainless steel, it offers flame-retardant and chemical-resistant properties, making it ideal for high-use workspaces.

Chemical  
Resistant

Durable

Heat  
Resistant

Scratch\*  
Resistant

X

X

X



## Best Suited For

CLASSROOMS



Our Dry Erase Marker Board Top features a 1 1/8" dry erase surface designed for everyday writing, collaboration, and instruction. Finished with colored edge banding, it offers both durability and a clean, finished appearance for classroom and workspace environments.

Writable top

Durable

Heat  
Resistant

Scratch\*  
Resistant

X

X



# TableTop Guide



FENIX ON  
BAL TIC BIRCH



## Best Suited For

SPECIALTY SPACES

CLASSROOMS

Combining innovation with performance, FENIX Tops offer a sleek, modern surface with thermal healing capabilities that reduce the appearance of superficial micro-scratches. Anti-fingerprinting technology helps maintain a smooth, matte finish ideal for high-use environments.

Thermal  
Healing

Durable

Heat  
Resistant

Scratch\*  
Resistant

X

X

Up to 300°F  
dry heat

X



## Best Suited For

SPECIALTY SPACES

CLASSROOMS



Built for performance and durability, our horizontal grade High-Pressure Laminate Tops feature a resilient laminate surface paired with a Baltic Birch core. This construction provides a strong, stable foundation with a clean, finished appearance ideal for high-use environments.

Thermal  
Healing

Durable

Heat  
Resistant

Scratch\*  
Resistant

X

X



# TableTop Guide



HIGH  
PRESSURE  
LAMINATE



## Best Suited For

SPECIALTY SPACES

CLASSROOMS

CEF's Horizontal Grade High-Pressure Laminate Tops with feature a durable laminate surface designed for everyday use, finished with a choice of colored edge banding for added protection and visual customization. Built for strength and longevity, these tops are ideal for classrooms and workspaces.

Colored Edge

Durable

Heat  
Resistant

Scratch\*  
Resistant

X

X

X



# UV COATED TOP TESTING

# Tablet Top Guide

Level 0 - No detectable change Level 1 - Slight change in color or gloss  
 Level 2 - Slight surface etching or severe staining Level 3 - Pitting, cratering,  
 swelling, or erosion of coating. Obvious and significant deterioration NT=not  
 Tested

Test #	Chemical reagent	Test Method A or B	Rating
1	Amyl Acetate	A	0
2	Ethyl Acetate	A	0
3	98% Acetic Acid	B	NT
4	Acetone	A	0
5	5% Acid Dichromate	B	NT
6	Butyl Alcohol	A	0
7	Ethyl Alcohol	A	0
8	Methyl Alcohol	A	0
9	28% Ammonium Hydroxide	B	0
10	Benzene	A	NT
11	Carbon Tetrachloride	A	NT
12	Chloroform	A	NT
13	60% Chromic Acid	A	1
14	Cresol	A	0
15	Dichlor Acetic Acid	A	0
16	Dimethylformamide	A	0
17	Dioxane	A	0
18	Ethyl Ether	A	0
19	37% Formaldehyde	A	0
20	90% Formic Acid	B	0
21	Furfural	A	0
22	Gasoline	A	0
23	37% Hydrochloric Acid	B	0
24	48% Hydrofluoric Acid	B	NT
25	30% Hydrogen Peroxide	B	0
26	Tincture of Iodine	B	2
27	MEK	A	0
28	Methylene Chloride	A	NT
29	Mono Chlorobenzene	A	0
30	Naphthalene	A	0
31	20% Nitric acid	B	0
32	30% Nitric Acid	B	0
33	70% Nitric Acid	B	3
34	90% Phenol	A	0
35	85% Phosphoric Acid	B	0
36	Saturated Silver Nitrate	B	0
37	10% Sodium Hydroxide	B	1
38	20% Sodium Hydroxide	B	NT
39	40% Sodium Hydroxide	B	1
40	Flake Sodium Hydroxide	B	0
41	Saturated Sodium Sulfide	B	0
42	33% Sulfuric Acid	B	0
43	77% Sulfuric Acid	B	0
44	96% Sulfuric Acid	B	3
45	77% Sulfuric Acid:70% Nitric Acid equal parts	B	3
46	Toluene	A	0
47	Trichloroethylene	A	0
48	Xylene	A	0
49	Saturated Zinc Chloride	B	0
TOTAL Level 3 Failures			3

# TableTop Guide

## **\*Scratch Resistance Disclaimer\***

CEF uses horizontal-grade high-pressure laminate on all tops and bases—the highest grade available for scratch resistance. While designed to withstand years of normal classroom use, all materials can scratch if misused or subjected to sharp objects or excessive force. Proper care and classroom management are required to maintain performance over time. This applies to all CEF surfaces featured in this brochure.



## Chemical Resistant Top Chemical Results

Acids	Level	Solvents	Level	Bases	Level
Aqua regia, Sulphuric Acid 77% & Nitric Acid 65%, equal part	0	Acetone	0	Ammonium Hydroxide 25%	0
Chromic Trioxide (Chromic Acid Cleaning Solution) 60%	0	Acetonitrile	0	Sodium Hydroxide 10%	0
Formic Acid 90%	0	Amyl Acetate	0	Sodium Hydroxide 20%	0
Glacial Acetic Acid 99%	0	Benzene	0	Sodium Hydroxide 40%	0
Hydrofluoric Acid 48%	0	Butyl Alcohol	0	Sodium Hydroxide Flakes	0
Nitric Acid 20%	0	Carbon Tetrachloride	0		
Nitric Acid 30%	0	Chloroform	0		
Nitric Acid 65%	0	Dichloromethane	0		
Nitric Acid 65%: Hydrochloric Acid 37% (1:3)	1	Diethyl Ether	0		
Perchloric Acid 60%	1	Dimethylformamide	0		
Phosphoric Acid 85%	0	Dioxane	0		
Sulphuric Acid 33%	0	Ethyl Acetate	0		
Sulphuric Acid 77%	1	Ethyl Alcohol	0		
Sulphuric Acid 77%: Nitric Acid 70% (1:1)	1	Formaldehyde 37%	0		
Sulphuric Acid 85%	0	Methanol	0		
Sulphuric Acid 85%: Nitric Acid 70% (1:1)	2	Methyl Ethyl Ketone	0		
Sulphuric Acid 96%	2	Methylene Chloride	0		
		Naphthalene	0		
		N-Hexane	0		
		Phenol 90%	0		
		Phenol Solution 80%	0		
		Tetrahydrofuran	0		
		Toluene	0		
		Trichloroethylene	0		
		Xylene	0		

### Legend

Level 0 No detectable change	Level 1 Slight change in color or gloss.	Level 2 Slight surface etching or severe staining.
Level 3 Pitting, cratering, swelling, or erosion of coating, obvious and significant deterioration.		

# TableTop Guide

General Reagents	Level	Stains & Indicators	Level
Copper Sulphate 5%	0	Aniline Blue, Water Soluble 1%	0
Ethylene Glycol	0	Congo Blue 1%	0
Ferric Sulphate 5%	0	Crystal Violet 0.1%	0
Gasoline	0	Gentian Violet 1%	0
Hydrogen Peroxide 3%	0	Malachite Green 0.1%	0
Iodine (Crystals)	1	Methyl Red 0.1%	0
Iodine tincture	1	Methylene Blue 0.1%	0
Karl Fischer Reagent	0	Phenolphthalein 0.1%	0
Kerosene	0	Thymol Blue 0.1%	0
Mineral Oil	0		
Potassium Iodide 10%	0		
Potassium Permanganate 0.1%	0		
Silver Nitrite 5%	0		
Sodium Chloride 10%	0		
Sodium Hypochlorite 5%	0		
Sodium Hypochlorite 13%	0		
Trisodium Phosphate 30%	0		
Urea 5%	0		
Vegetable Oil (Olive)	0		
Water	0		
Zinc Chloride (saturated solution)	0		

## Legend

Level 0 No detectable change	Level 1 Slight change in color or gloss.	Level 2 Slight surface etching or severe staining.
Level 3 Pitting, cratering, swelling, or erosion of coating, obvious and significant deterioration.		

Tested as per EN 438-2, TM 26: 2016, SEFA PL 8.1-2020 & SEFA 3.0-2020 standards.