

Clamber Tiered Seating

Introduction

Product Overview	3
Statement of Line	4
Planning with Additional Products	21
Imaginasium Square Blips & Caddy	21
C-Table & C-Table Max.....	22
Typical Configurations	23
Clamber Wall Guidelines.....	30
Clamber Wall with Worksurface Mount Guidelines	30
Clamber Wall Laminate Worksurface Guidelines	31
Clamber Planter Guidelines.....	31
Specifying Top & Base Material	32
Seam Locations.....	41
Laminate Orientation	45
Ganging Guidelines.....	49
Ganging Requirements.....	50
Ganging Location Recommendations.....	51
Clamber Wall with Worksurface Ganging	54
Worksurface Leg Kit	55

Electrical

Power Modules	56
Power Module Locations.....	57

**CLAMBER
MODULAR
LOUNGE
SEATING**

Product Overview

Dare to Play. Dare to Climb. Dare to Clamber.

Clamber tiered seating reimagines how users of all ages interact with their environment. Designed with modular, linear, and curved shapes in multi-level configurations, Clamber offers a playful solution perfect for team collaboration, student learning, individual study, and relaxation.

Its versatility frees users from the ordinary, empowering them to choose where and how they sit, stand, and clamber.

With reconfigurable units, tier-top material choice, and replaceability, Clamber invites you to continuously reinvent any dynamic environment, making it an adaptable, fun seating solution for evolving spaces.

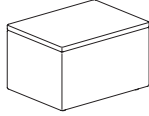
Unleash your creativity with Clamber's expansive statement of line, offering modular units, unique shapes, and wall elements as well as storage and planter options with endless possibilities. Explore options like matching or contrasting upholstery, power integration, and custom thread colors to create a truly unique look. For added function, Clamber also offers a variety of laminate top and wall worksurface finishes to bring both style and utility to every design.

Dimensional Tolerance

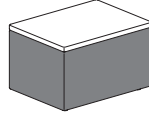
Due to variations in foam and upholstery in the manufacturing process, all units have a dimensional tolerance of up to $+1/4"$ (width & depth) when fitting together, or into spaces. The tolerance is compounded as more units are added into a configuration. For example: Two 48" units side-to-side should factor in a possible overall width of $96\frac{1}{2}"$ ($+1/4"$ per unit).

Statement of Line

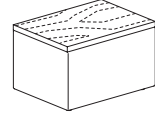
One-Tier Seating



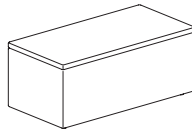
Straight - 24" Wide
 Upholstered Top
 Non-Contrast
 24" W x 18" D x 15" H
 CL1R2U



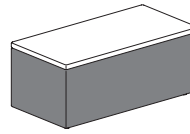
Straight - 24" Wide
 Upholstered Top
 Contrast
 24" W x 18" D x 15" H
 CL1R2UFC



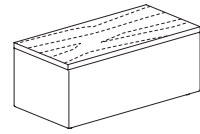
Straight - 24" Wide
 Laminate Top
 Non-Contrast
 24" W x 18" D x 15" H
 CL1R2L



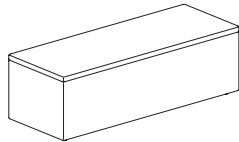
Straight - 36" Wide
 Upholstered Top
 Non-Contrast
 36" W x 18" D x 15" H
 CL1R3U



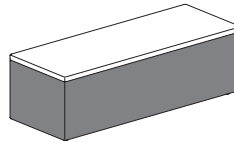
Straight - 36" Wide
 Upholstered Top
 Contrast
 36" W x 18" D x 15" H
 CL1R3UFC



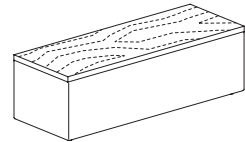
Straight - 36" Wide
 Laminate Top
 Non-Contrast
 36" W x 18" D x 15" H
 CL1R3L



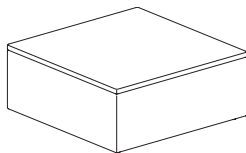
Straight - 48" Wide
 Upholstered Top
 Non-Contrast
 48" W x 18" D x 15" H
 CL1R4U



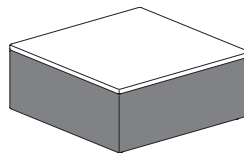
Straight - 48" Wide
 Upholstered Top
 Contrast
 48" W x 18" D x 15" H
 CL1R4UFC



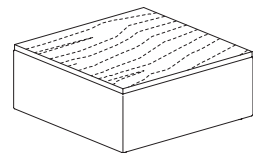
Straight - 48" Wide
 Laminate Top
 Non-Contrast
 48" W x 18" D x 15" H
 CL1R4L



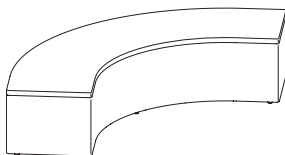
Square - 36" Wide
 Upholstered Top
 Non-Contrast
 35³/₄" W x 35³/₄" D x 15" H
 CL1SQU



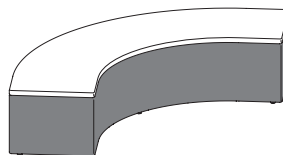
Square - 36" Wide
 Upholstered Top
 Contrast
 35³/₄" W x 35³/₄" D x 15" H
 CL1SQUFC



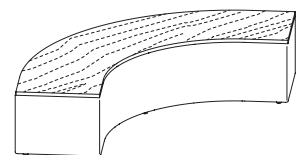
Square - 36" Wide
 Laminate Top
 Non-Contrast
 35³/₄" W x 35³/₄" D x 15" H
 CL1SQL



Inside Corner
 Upholstered Top
 Non-Contrast
 76¹/₂" W x 18" D x 15" H
 CL1CNU



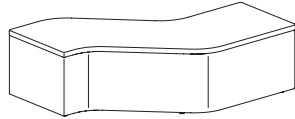
Inside Corner
 Upholstered Top
 Contrast
 75⁷/₈" W x 18" D x 15" H
 CL1CNUFC



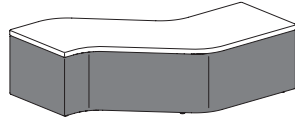
Inside Corner
 Laminate Top
 Non-Contrast
 76¹/₂" W x 18" D x 15" H
 CL1CNL

Statement of Line
 (cont.)

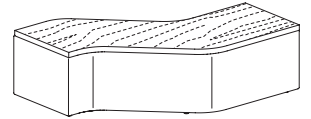
One-Tier Seating (cont.)



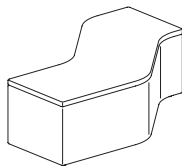
S-Curve - Left
 Upholstered Top
 Non-Contrast
 48" W x 18" D x 15" H
 CL1SLU



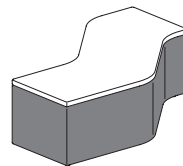
S-Curve - Left
 Upholstered Top
 Contrast
 48" W x 18" D x 15" H
 CL1SLUFC



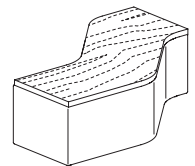
S-Curve - Left
 Laminate Top
 Non-Contrast
 48" W x 18" D x 15" H
 CL1SLL



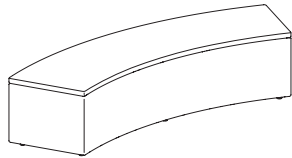
S-Curve - Right
 Upholstered Top
 Non-Contrast
 48" W x 18" D x 15" H
 CL1SRU



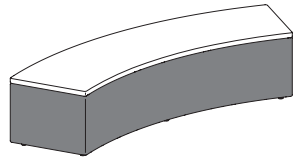
S-Curve - Right
 Upholstered Top
 Contrast
 48" W x 18" D x 15" H
 CL1SRUFC



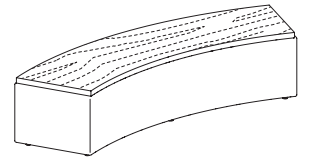
S-Curve - Right
 Laminate Top
 Non-Contrast
 48" W x 18" D x 15" H
 CL1SRL



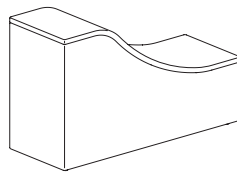
Inside Curve - 45 Degree
 Upholstered Top
 Non-Contrast
 70 1/4" W x 18" D x 15" H
 CL1VNU



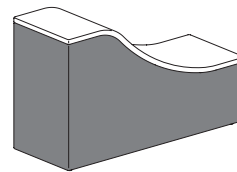
Inside Curve - 45 Degree
 Upholstered Top
 Contrast
 70 1/4" W x 18" D x 15" H
 CL1VNUFC



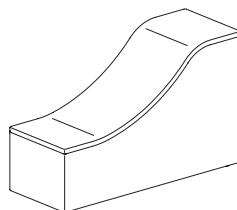
Inside Curve - 45 Degree
 Laminate Top
 Non-Contrast
 70 1/4" W x 18" D x 15" H
 CL1VNL



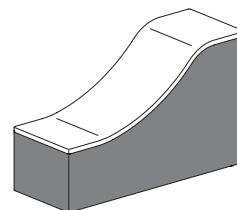
Wave - Left
 Upholstered Top
 Non-Contrast
 48" W x 18" D x 30" H
 CL1WLU



Wave - Left
 Upholstered Top
 Contrast
 48" W x 18" D x 30" H
 CL1WLUFC



Wave - Right
 Upholstered Top
 Non-Contrast
 48" W x 18" D x 30" H
 CL1WRU



Wave - Right
 Upholstered Top
 Contrast
 48" W x 18" D x 30" H
 CL1WRUFC

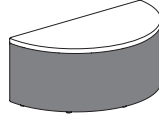
■ Clamber™ Tiered Seating - Introduction
 Planning Guide

Statement of Line
 (cont.)

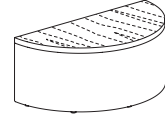
One-Tier Seating (cont.)



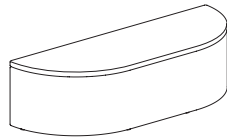
Half-Round - 36" Wide
 Upholstered Top
 Non-Contrast
 36" W x 18½" D x 15" H
 CL1HRU



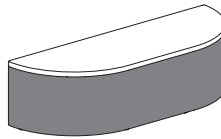
Half-Round - 36" Wide
 Upholstered Top
 Contrast
 36" W x 18½" D x 15" H
 CL1HRUFC



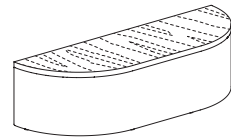
Half-Round - 36" Wide
 Laminate Top
 Non-Contrast
 36" W x 18½" D x 15" H
 CL1HRL



Half Oval - 54" Wide
 Upholstered Top
 Non-Contrast
 54" W x 18¼" D x 15" H
 CL1HUVU

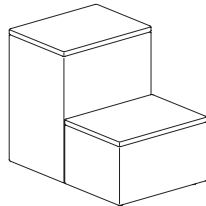


Half Oval - 54" Wide
 Upholstered Top
 Contrast
 54" W x 18¼" D x 15" H
 CL1HUVFC

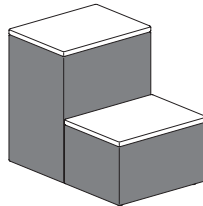


Half Oval - 54" Wide
 Laminate Top
 Non-Contrast
 54" W x 18¼" D x 15" H
 CL1HVL

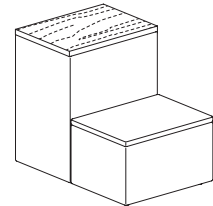
Two-Tiered Seating



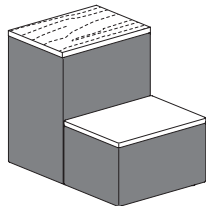
Straight - 24" Wide
 Upholstered Top on Both Tiers
 Non-Contrast
 24" W x 36" D x 30" H
 CL2R2UU



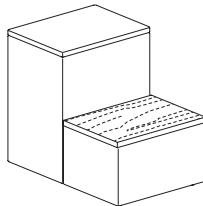
Straight - 24" Wide
 Upholstered Top on Both Tiers
 Contrast
 24" W x 36" D x 30" H
 CL2R2UFC



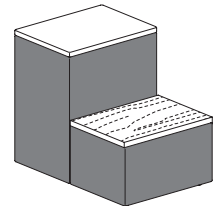
Straight - 24" Wide
 Laminate Top on Upper Tier
 Upholstered Top on Lower Tier
 Non-Contrast
 24" W x 36" D x 30" H
 CL2R2UL



Straight - 24" Wide
 Laminate Top on Upper Tier
 Upholstered Top on Lower Tier
 Contrast
 24" W x 36" D x 30" H
 CL2R2ULFC



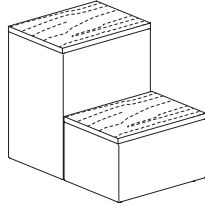
Straight - 24" Wide
 Upholstered Top on Upper Tier
 Laminate Top on Lower Tier
 Non-Contrast
 24" W x 36" D x 30" H
 CL2R2LU



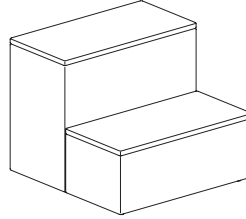
Straight - 24" Wide
 Upholstered Top on Upper Tier
 Laminate Top on Lower Tier
 Contrast
 24" W x 36" D x 30" H
 CL2R2LUFC

Statement of Line
 (cont.)

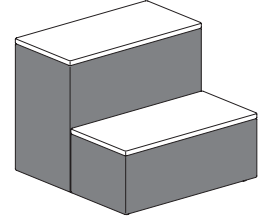
Two-Tiered Seating (cont.)



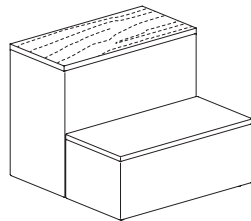
Straight - 24" Wide
 Laminate Top on Both Tiers
 Non-Contrast
 24" W x 36" D x 30" H
 CL2R2LL



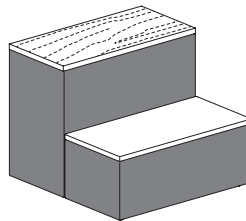
Straight - 36" Wide
 Upholstered Top on Both Tiers
 Non-Contrast
 36" W x 36" D x 30" H
 CL2R3UU



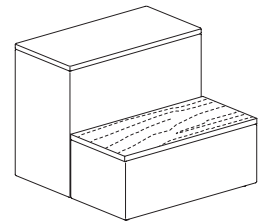
Straight - 36" Wide
 Upholstered Top on Both Tiers
 Contrast
 36" W x 36" D x 30" H
 CL2R3UUC



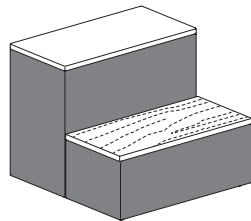
Straight - 36" Wide
 Laminate Top on Upper Tier
 Upholstered Top on Lower Tier
 Non-Contrast
 36" W x 36" D x 30" H
 CL2R3UL



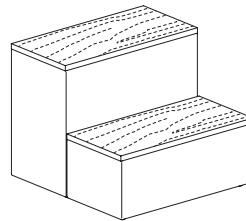
Straight - 36" Wide
 Laminate Top on Upper Tier
 Upholstered Top on Lower Tier
 Contrast
 36" W x 36" D x 30" H
 CL2R3ULFC



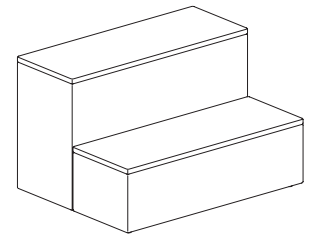
Straight - 36" Wide
 Upholstered Top on Upper Tier
 Laminate Top on Lower Tier
 Non-Contrast
 36" W x 36" D x 30" H
 CL2R3LU



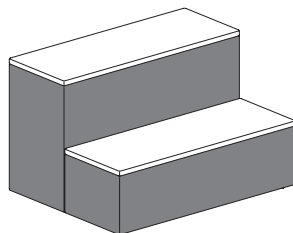
Straight - 36" Wide
 Upholstered Top on Upper Tier
 Laminate Top on Lower Tier
 Contrast
 36" W x 36" D x 30" H
 CL2R3LUC



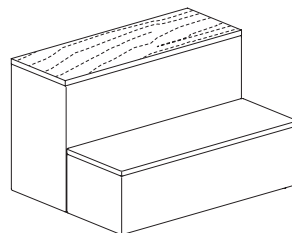
Straight - 36" Wide
 Laminate Top on Both Tiers
 Non-Contrast
 36" W x 36" D x 30" H
 CL2R3LL



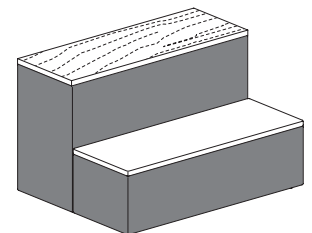
Straight - 48" Wide
 Upholstered Top on Both Tiers
 Non-Contrast
 48" W x 36" D x 30" H
 CL2R4UU



Straight - 48" Wide
 Upholstered Top on Both Tiers
 Contrast
 48" W x 36" D x 30" H
 CL2R4UUC



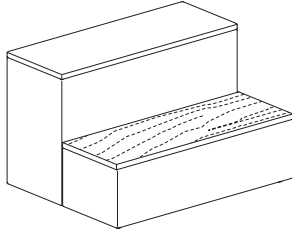
Straight - 48" Wide
 Laminate Top on Upper Tier
 Upholstered Top on Lower Tier
 Non-Contrast
 48" W x 36" D x 30" H
 CL2R4UL



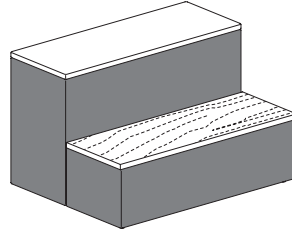
Straight - 48" Wide
 Laminate Top on Upper Tier
 Upholstered Top on Lower Tier
 Contrast
 48" W x 36" D x 30" H
 CL2R4ULFC

Statement of Line
 (cont.)

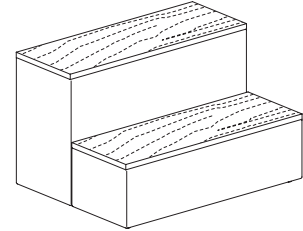
Two-Tiered Seating



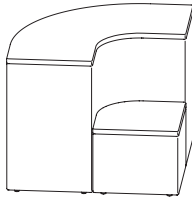
Straight - 48" Wide
 Upholstered Top on Upper Tier
 Laminate Top on Lower Tier
 Non-Contrast
 48" W x 36" D x 30" H
 CL2R4LU



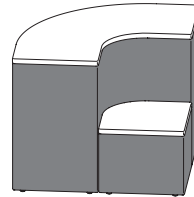
Straight - 48" Wide
 Upholstered Top on Upper Tier
 Laminate Top on Lower Tier
 Contrast
 48" W x 36" D x 30" H
 CL2R4LUFC



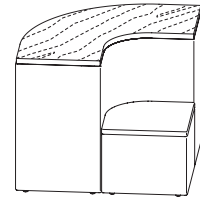
Straight - 48" Wide
 Laminate Top on Both Tiers
 Non-Contrast
 48" W x 36" D x 30" H
 CL2R4LL



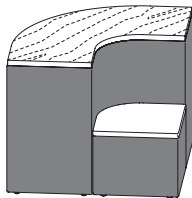
Inside Corner
 Upholstered Top on Both Tiers
 Non-Contrast
 51" W x 36" D x 30" H
 CL2CNUU



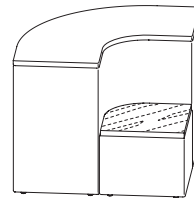
Inside Corner
 Upholstered Top on Both Tiers
 Contrast
 51" W x 36" D x 30" H
 CL2CNUUFC



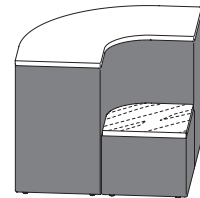
Inside Corner
 Laminate Top on Upper Tier
 Upholstered Top on Lower Tier
 Non-Contrast
 51" W x 36" D x 30" H
 CL2CNUL



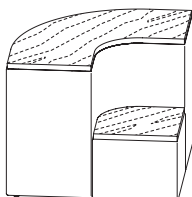
Inside Corner
 Laminate Top on Upper Tier
 Upholstered Top on Lower Tier
 Contrast
 51" W x 36" D x 30" H
 CL2CNULFC



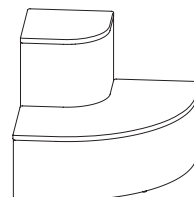
Inside Corner
 Upholstered Top on Upper Tier
 Laminate Top on Lower Tier
 Non-Contrast
 51" W x 36" D x 30" H
 CL2CNLU



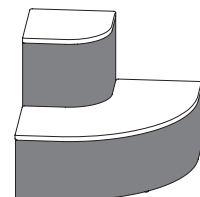
Inside Corner
 Upholstered Top on Upper Tier
 Laminate Top on Lower Tier
 Contrast
 51" W x 36" D x 30" H
 CL2CNLUFC



Inside Corner
 Laminate Top on Both Tiers
 Non-Contrast
 51" W x 36" D x 30" H
 CL2CNLL



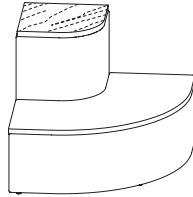
Outside Corner
 Upholstered Top on Both Tiers
 Non-Contrast
 51" W x 36" D x 30" H
 CL2CTUU



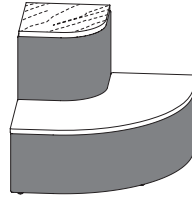
Outside Corner
 Upholstered Top on Both Tiers
 Contrast
 51" W x 36" D x 30" H
 CL2CTUFC

Statement of Line
 (cont.)

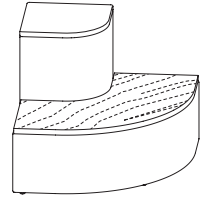
Two-Tiered Seating (cont.)



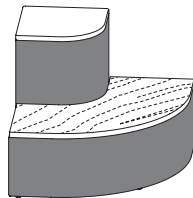
Outside Corner
 Laminate Top on Upper Tier
 Upholstered Top on Lower Tier
 Non-Contrast
 51" W x 36" D x 30" H
 CL2CTUL



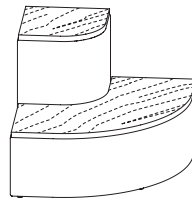
Outside Corner
 Laminate Top on Upper Tier
 Upholstered Top on Lower Tier
 Contrast
 51" W x 36" D x 30" H
 CL2CTULFC



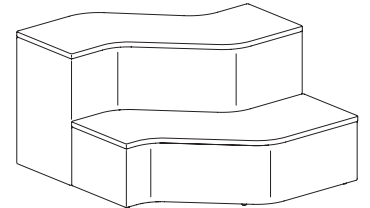
Outside Corner
 Upholstered Top on Upper Tier
 Laminate Top on Lower Tier
 Non-Contrast
 51" W x 36" D x 30" H
 CL2CTLU



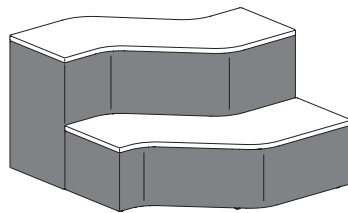
Outside Corner
 Upholstered Top on Upper Tier
 Laminate Top on Lower Tier
 Contrast
 51" W x 36" D x 30" H
 CL2CTLUFC



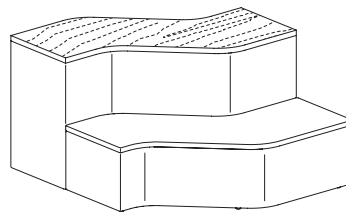
Outside Corner
 Laminate Top on Both Tiers
 Non-Contrast
 51" W x 36" D x 30" H
 CL2CTLL



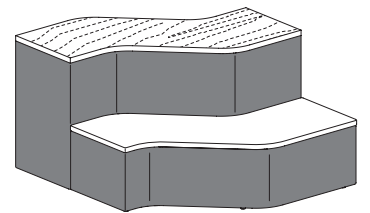
S-Curve - Left
 Upholstered Top on Both Tiers
 Non-Contrast
 48" W x 36" D x 30" H
 CL2SLUU



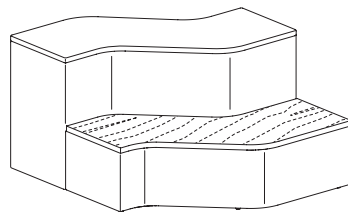
S-Curve - Left
 Upholstered Top on Both Tiers
 Contrast
 48" W x 36" D x 30" H
 CL2SLUUF



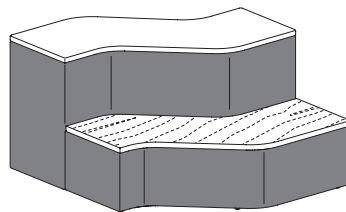
S-Curve - Left
 Laminate Top on Upper Tier
 Upholstered Top on Lower Tier
 Non-Contrast
 48" W x 36" D x 30" H
 CL2SLUL



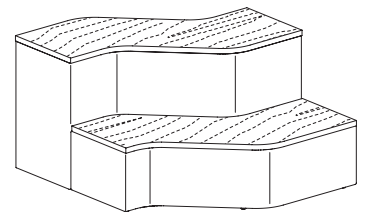
S-Curve - Left
 Laminate Top on Upper Tier
 Upholstered Top on Lower Tier
 Contrast
 48" W x 36" D x 30" H
 CL2SLULFC



S-Curve - Left
 Upholstered Top on Upper Tier
 Laminate Top on Lower Tier
 Non-Contrast
 48" W x 36" D x 30" H
 CL2SLLU



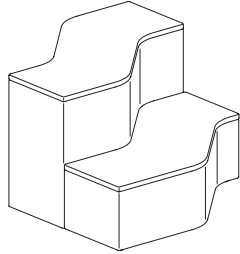
S-Curve - Left
 Upholstered Top on Upper Tier
 Laminate Top on Lower Tier
 Contrast
 48" W x 36" D x 30" H
 CL2SLLUFC



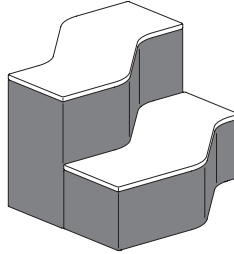
S-Curve - Left
 Laminate Top on Both Tiers
 Non-Contrast
 48" W x 36" D x 30" H
 CL2SLLL

Statement of Line
 (cont.)

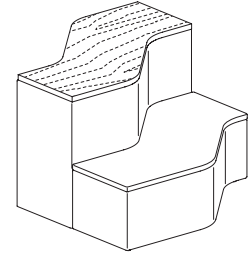
Two-Tiered Seating (cont.)



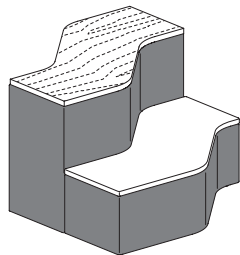
S-Curve - Right
 Upholstered Top on Both Tiers
 Non-Contrast
 48" W x 36" D x 30" H
 CL2SRUU



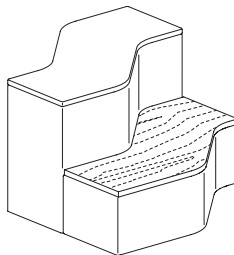
S-Curve - Right
 Upholstered Top on Both Tiers
 Contrast
 48" W x 36" D x 30" H
 CL2SRUUF



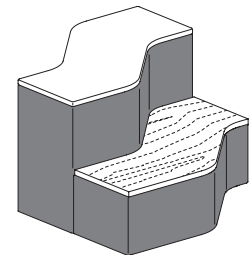
S-Curve - Right
 Laminate Top on Upper Tier
 Upholstered Top on Lower Tier
 Non-Contrast
 48" W x 36" D x 30" H
 CL2SRUL



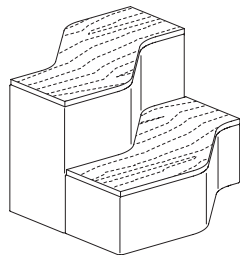
S-Curve - Right
 Laminate Top on Upper Tier
 Upholstered Top on Lower Tier
 Contrast
 48" W x 36" D x 30" H
 CL2SRULFC



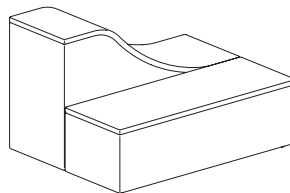
S-Curve - Right
 Upholstered Top on Upper Tier
 Laminate Top on Lower Tier
 Non-Contrast
 48" W x 36" D x 30" H
 CL2SRUL



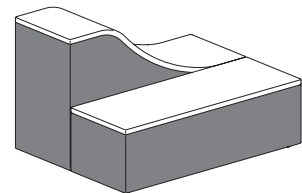
S-Curve - Right
 Upholstered Top on Upper Tier
 Laminate Top on Lower Tier
 Contrast
 48" W x 36" D x 30" H
 CL2SRULFC



S-Curve - Right
 Laminate Top on Both Tiers
 Non-Contrast
 48" W x 36" D x 30" H
 CL2SRLL



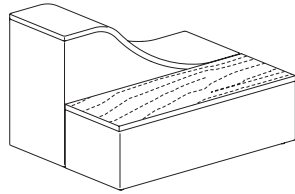
Wave - Left
 Upholstered Top on Both Tiers
 Non-Contrast
 48" W x 36" D x 30" H
 CL2WLUU



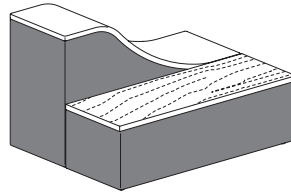
Wave - Left
 Upholstered Top on Both Tiers
 Contrast
 48" W x 36" D x 30" H
 CL2WLUUF

Statement of Line
 (cont.)

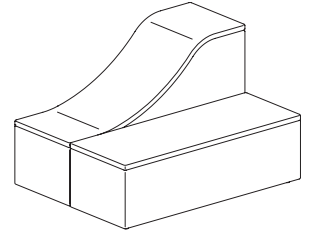
Two-Tiered Seating (cont.)



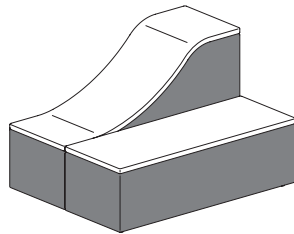
Wave - Left
 Upholstered Top on Upper Tier
 Laminate Top on Lower Tier
 Non-Contrast
 48" W x 36" D x 30" H
 CL2WLLU



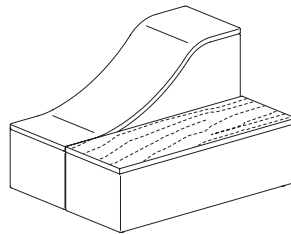
Wave - Left
 Upholstered Top on Upper Tier
 Laminate Top on Lower Tier
 Contrast
 48" W x 36" D x 30" H
 CL2WLLUFC



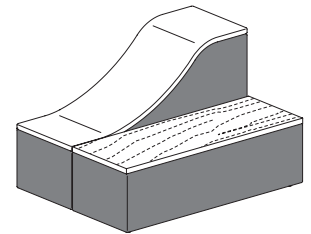
Wave - Right
 Upholstered Top on Both Tiers
 Non-Contrast
 48" W x 36" D x 30" H
 CL2WRUU



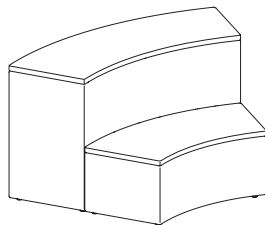
Wave - Right
 Upholstered Top on Both Tiers
 Contrast
 48" W x 36" D x 30" H
 CL2WRUUFC



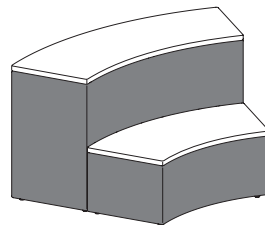
Wave - Right
 Upholstered Top on Upper Tier
 Laminate Top on Lower Tier
 Non-Contrast
 48" W x 36" D x 30" H
 CL2WRLU



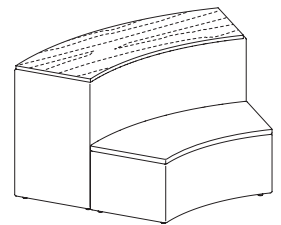
Wave - Right
 Upholstered Top on Upper Tier
 Laminate Top on Lower Tier
 Contrast
 48" W x 36" D x 30" H
 CL2WRLUFC



Inside Curve - 45 Degree
 Upholstered Top on Both Tiers
 Non-Contrast
 56½" W x 36" D x 30" H
 CL2VNUU



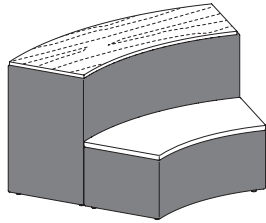
Inside Curve - 45 Degree
 Upholstered Top on Both Tiers
 Contrast
 56½" W x 36" D x 30" H
 CL2VNUFC



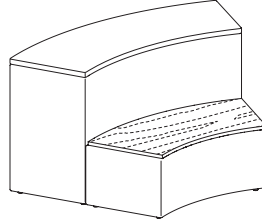
Inside Curve - 45 Degree
 Laminate Top on Upper Tier
 Upholstered Top on Lower Tier
 Non-Contrast
 56½" W x 36" D x 30" H
 CL2VNUL

Statement of Line
 (cont.)

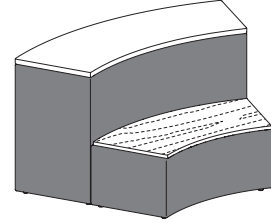
Two-Tiered Seating (cont.)



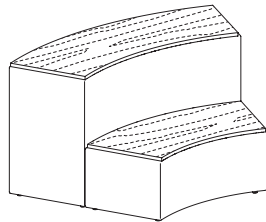
Inside Curve - 45 Degree
 Laminate Top on Upper Tier
 Upholstered Top on Lower Tier
 Contrast
 56½" W x 36" D x 30" H
 CL2VNULFC



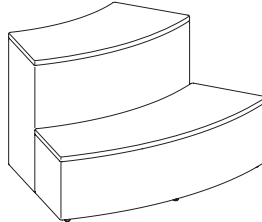
Inside Curve - 45 Degree
 Upholstered Top on Upper Tier
 Laminate Top on Lower Tier
 Non-Contrast
 56½" W x 36" D x 30" H
 CL2VNUU



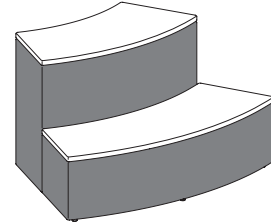
Inside Curve - 45 Degree
 Upholstered Top on Upper Tier
 Laminate Top on Lower Tier
 Contrast
 56½" W x 36" D x 30" H
 CL2VNUFC



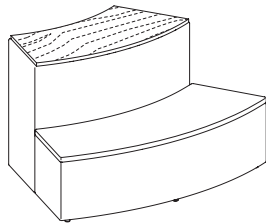
Inside Curve - 45 Degree
 Laminate Top on Both Tiers
 Non-Contrast
 56½" W x 36" D x 30" H
 CL2VNLL



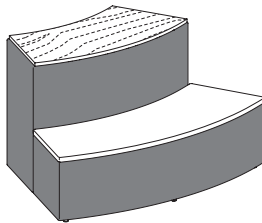
Outside Curve - 45 Degree
 Upholstered Top on Both Tiers
 Non-Contrast
 56½" W x 36" D x 30" H
 CL2VTUU



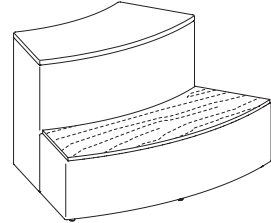
Outside Curve - 45 Degree
 Upholstered Top on Both Tiers
 Contrast
 56½" W x 36" D x 30" H
 CL2VTUFC



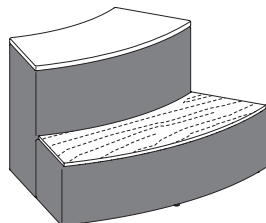
Outside Curve - 45 Degree
 Laminate Top on Upper Tier
 Upholstered Top on Lower Tier
 Non-Contrast
 56½" W x 36" D x 30" H
 CL2VTUL



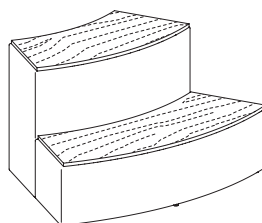
Outside Curve - 45 Degree
 Laminate Top on Upper Tier
 Upholstered Top on Lower Tier
 Contrast
 56½" W x 36" D x 30" H
 CL2VTULFC



Outside Curve - 45 Degree
 Upholstered Top on Upper Tier
 Laminate Top on Lower Tier
 Non-Contrast
 56½" W x 36" D x 30" H
 CL2VTLU



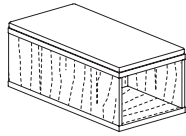
Outside Curve - 45 Degree
 Upholstered Top on Upper Tier
 Laminate Top on Lower Tier
 Contrast
 56½" W x 36" D x 30" H
 CL2VTLUFC



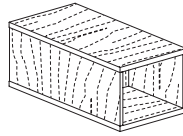
Outside Curve - 45 Degree
 Laminate Top on Both Tiers
 Non-Contrast
 56½" W x 36" D x 30" H
 CL2VTLL

Statement of Line
 (cont.)

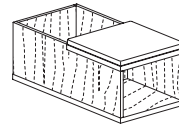
One-Tier Seating with Storage



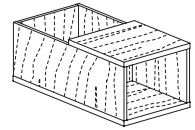
Straight - 18" Wide
 2 Open Storage, Dual-Sided
 Upholstered Top
 18" W x 36" D x 15" H
 CLCR1U



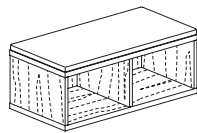
Straight - 18" Wide
 2 Open Storage, Dual-Sided
 Laminate Top
 18" W x 36" D x 15" H
 CLCR1L



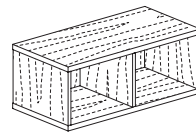
Straight - 18" Wide
 1 Open Storage
 1 Planter on Lower Tier
 Upholstered Top
 18" W x 36" D x 15" H
 CLCR1P1U



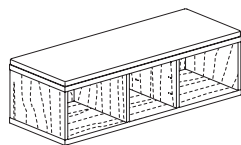
Straight - 18" Wide
 1 Open Storage
 1 Planter on Lower Tier
 Laminate Top
 18" W x 36" D x 15" H
 CLCR1P1L



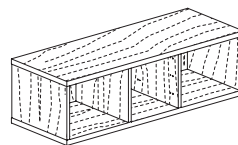
Straight - 36" Wide
 2 Open Storage
 Upholstered Top
 36" W x 18" D x 15" H
 CLCR3U



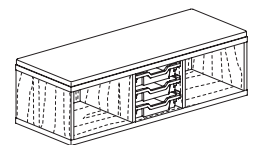
Straight - 36" Wide
 2 Open Storage
 Laminate Top
 36" W x 18" D x 15" H
 CLCR3L



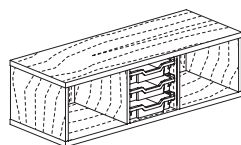
Straight - 48" Wide
 3 Open Storage
 Upholstered Top
 48" W x 18" D x 15" H
 CLCR4U



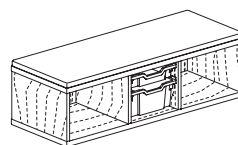
Straight - 48" Wide
 3 Open Storage
 Laminate Top
 48" W x 18" D x 15" H
 CLCR4L



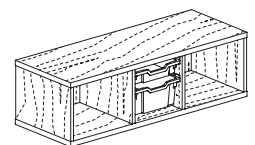
Straight - 48" Wide
 2 Open & Center 3-Tote Storage
 Upholstered Top
 48" W x 18" D x 15" H
 CLCR4T3U



Straight - 48" Wide
 2 Open & Center 3-Tote Storage
 Laminate Top
 48" W x 18" D x 15" H
 CLCR4T3L



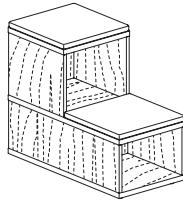
Straight - 48" Wide
 2 Open Storage, Dual-Sided
 Upholstered Top
 48" W x 18" D x 15" H
 CLCR4T2U



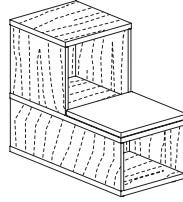
Straight - 48" Wide
 2 Open & Center 3-Tote Storage
 Laminate Top
 48" W x 18" D x 15" H
 CLCR4T2L

Statement of Line
 (cont.)

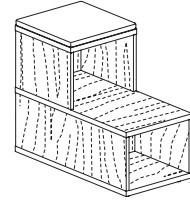
Two-Tiered Seating with Storage



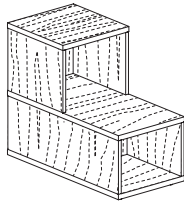
Straight - 18" Wide
 3 Open Storage, Dual-Sided
 Upholstered Top on both Tiers
 18" W x 36" D x 30" H
 CLDR1UU



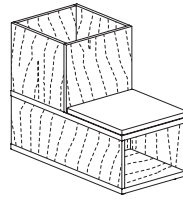
Straight - 18" Wide
 3 Open Storage, Dual-Sided
 Laminate Top on Upper Tier
 Upholstered Top on Lower Tier
 18" W x 36" D x 30" H
 CLDR1UL



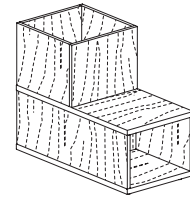
Straight - 48" Wide
 3 Open Storage, Dual-Sided
 Upholstered Top on Upper Tier
 Laminate Top on Lower Tier
 18" W x 36" D x 30" H
 CLDR1LU



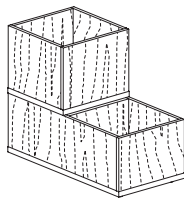
Straight - 18" Wide
 3 Open Storage, Dual-Sided
 Laminate Top on both Tiers
 18" W x 36" D x 30" H
 CLDR1LL



Straight - 18" Wide
 2 Open Storage, Dual-Sided
 1 Planter on Upper Tier
 Upholstered Top on Lower Tier
 18" W x 36" D x 28¹/₄" H
 CLDR1UP



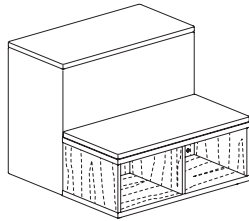
Straight - 18" Wide
 2 Open Storage, Dual-Sided
 1 Planter on Upper Tier
 Laminate Top on Lower Tier
 18" W x 36" D x 28¹/₄" H
 CLDR1LP



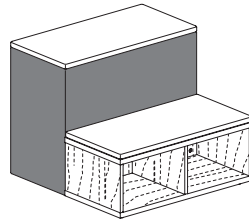
Straight - 18" Wide
 Planters on both Tiers
 18" W x 36" D x 28¹/₄" H
 CLDR1PP

Statement of Line
 (cont.)

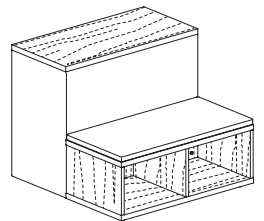
Two-Tiered Seating with Storage (cont.)



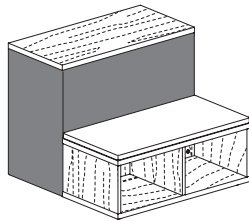
Straight - 36" Wide
 2 Open Storage
 Upholstered Top on both Tiers
 Non-Contrast
 36" W x 18" D x 30" H
 CLDR3UU



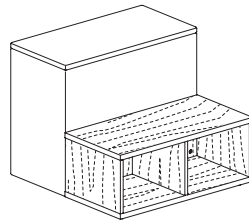
Straight - 36" Wide
 2 Open Storage
 Upholstered Top on both Tiers
 Contrast
 36" W x 18" D x 30" H
 CLDR3UUF



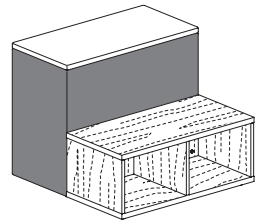
Straight - 36" Wide
 2 Open Storage
 Laminate Top on Upper Tier
 Upholstered Top on Lower Tier
 Non-Contrast
 36" W x 18" D x 30" H
 CLDR3UL



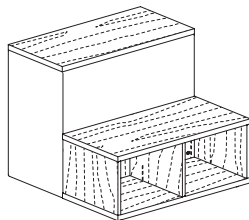
Straight - 36" Wide
 2 Open Storage
 Laminate Top on Upper Tier
 Upholstered Top on Lower Tier
 Contrast
 36" W x 18" D x 30" H
 CLDR3ULFC



Straight - 36" Wide
 2 Open Storage
 Upholstered Top on Upper Tier
 Laminate Top on Lower Tier
 Non-Contrast
 36" W x 18" D x 30" H
 CLDR3LU



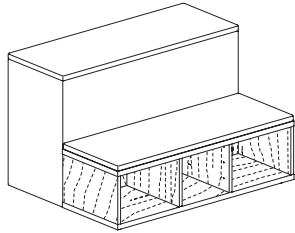
Straight - 36" Wide
 2 Open Storage
 Upholstered Top on Upper Tier
 Laminate Top on Lower Tier
 Contrast
 36" W x 18" D x 30" H
 CLDR3LUFC



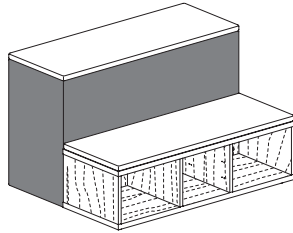
Straight - 36" Wide
 2 Open Storage
 Laminate Top on Both Tiers
 36" W x 18" D x 30" H
 CLDR3LL

Statement of Line
 (cont.)

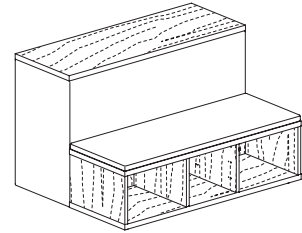
Two-Tiered Seating with Storage (cont.)



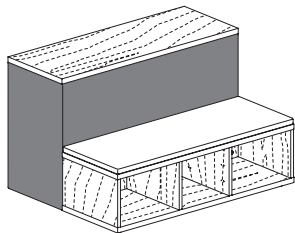
Straight - 48" Wide
 3 Open Storage
 Upholstered Top on Both Tiers
 Non-Contrast
 48" W x 18" D x 30" H
 CLDR4UU



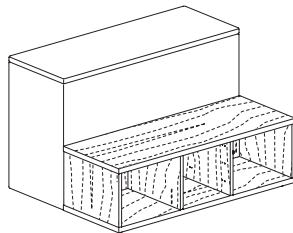
Straight - 48" Wide
 3 Open Storage
 Upholstered Top on Both Tiers
 Contrast
 48" W x 18" D x 30" H
 CLDR4UUF



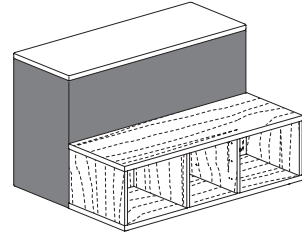
Straight - 48" Wide
 3 Open Storage
 Laminate Top on Upper Tier
 Upholstered Top on Lower Tier
 Non-Contrast
 48" W x 18" D x 30" H
 CLDR4UL



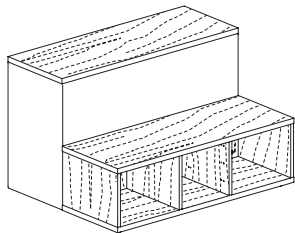
Straight - 48" Wide
 3 Open Storage
 Laminate Top on Upper Tier
 Upholstered Top on Lower Tier
 Contrast
 48" W x 18" D x 30" H
 CLDR3ULFC



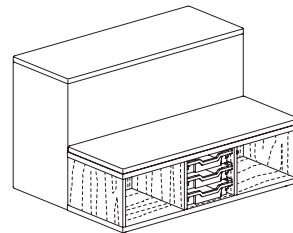
Straight - 48" Wide
 3 Open Storage
 Upholstered Top on Upper Tier
 Laminate Top on Lower Tier
 Non-Contrast
 48" W x 18" D x 30" H
 CLDR4LU



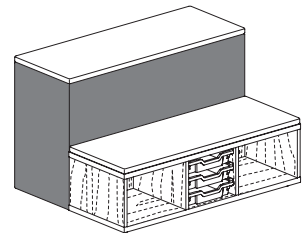
Straight - 36" Wide
 3 Open Storage
 Upholstered Top on Upper Tier
 Laminate Top on Lower Tier
 Contrast
 48" W x 18" D x 30" H
 CLDR4LUF



Straight - 48" Wide
 3 Open Storage
 Laminate Tops on Both Tiers
 48" W x 18" D x 30" H
 CLDR4LL



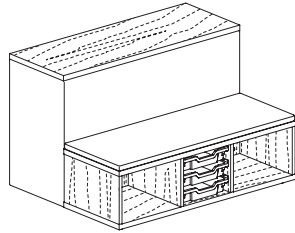
Straight - 48" Wide
 2 Open & Center 3-Tote Storage
 Upholstered Tops on Both Tiers
 Non-Contrast
 48" W x 18" D x 30" H
 CLDR4T3UU



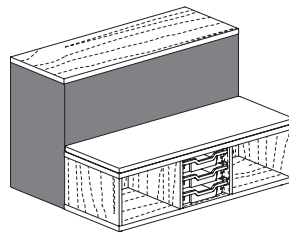
Straight - 48" Wide
 2 Open & Center 3-Tote Storage
 Upholstered Tops on Both Tiers
 Contrast
 48" W x 18" D x 30" H
 CLDR4T3UUF

Statement of Line
 (cont.)

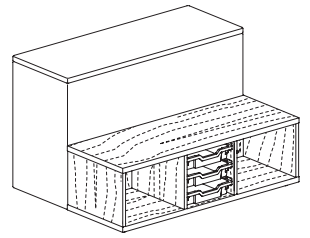
Two-Tiered Seating with Storage (cont.)



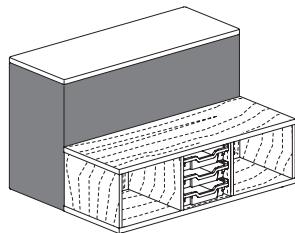
Straight - 48" Wide
 2 Open & Open 3-Tote Storage
 Laminate Top on Upper Tier
 Upholstered Top on Lower Tier
 Non-Contrast
 48" W x 18" D x 30" H
 CLDR4T3UL



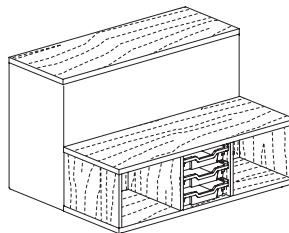
Straight - 48" Wide
 2 Open & Open 3-Tote Storage
 Laminate Top on Upper Tier
 Upholstered Top on Lower Tier
 Contrast
 48" W x 18" D x 30" H
 CLDR4T3ULFC



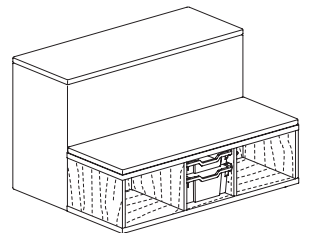
Straight - 48" Wide
 2 Open & Center 3-Tote Storage
 Upholstered Top on Upper Tier
 Laminate Top on Lower Tier
 Non-contrast
 48" W x 18" D x 30" H
 CLDR4T3LU



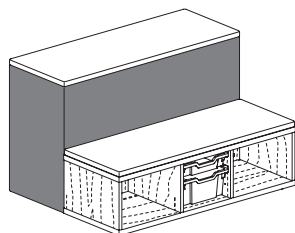
Straight - 48" Wide
 2 Open & Open 3-Tote Storage
 Upholstered Top on Upper Tier
 Laminate Top on Lower Tier
 48" W x 18" D x 30" H
 Contrast
 CLDR4T3LUF



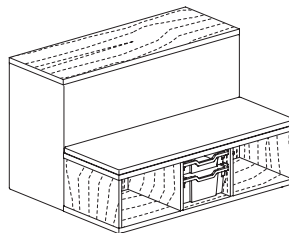
Straight - 48" Wide
 2 Open & Open 3-Tote Storage
 Laminate Tops on Both Tiers
 48" W x 18" D x 30" H
 CLDR4T3LL



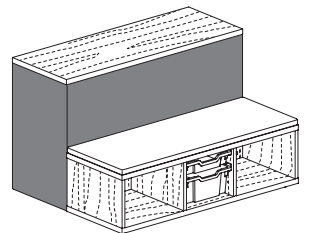
Straight - 48" Wide
 2 Open & Center 2-Tote Storage
 Upholstered Tops on Both Tiers
 Non-contrast
 48" W x 18" D x 30" H
 CLDR4T2UU



Straight - 48" Wide
 2 Open & Center 2-Tote Storage
 Upholstered Tops on Both Tiers
 Contrast
 48" W x 18" D x 30" H
 CLDR4T2UUF



Straight - 48" Wide
 2 Open & Open 2-Tote Storage
 Laminate Top on Upper Tier
 Upholstered Top on Lower Tier
 Non-contrast
 48" W x 18" D x 30" H
 CLDR4T2UL

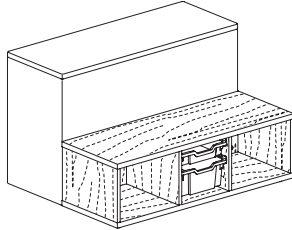


Straight - 48" Wide
 2 Open & Center 2-Tote Storage
 Laminate Top on Upper Tier
 Upholstered Top on Lower Tier
 Contrast
 48" W x 18" D x 30" H
 CLDR4T2ULFC

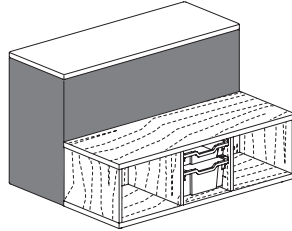
■ Clamber™ Tiered Seating - Introduction
Planning Guide

Statement of Line
(cont.)

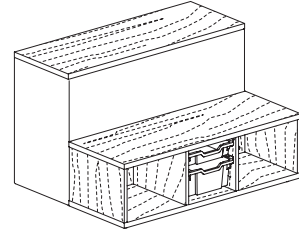
Two-Tiered Seating with Storage (cont.)



Straight - 48" Wide
2 Open & Open 2-Tote Storage
Upholstered Top on Upper Tier
Laminate Top on Lower Tier
Non-contrast
48" W x 18" D x 30" H
CLDR4T2LU



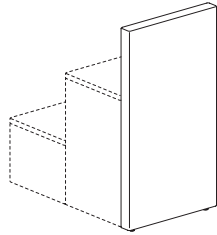
Straight - 48" Wide
2 Open & Open 2-Tote Storage
Upholstered Top on Upper Tier
Laminate Top on Lower Tier
Contrast
48" W x 18" D x 30" H
CLDR4T2LUF



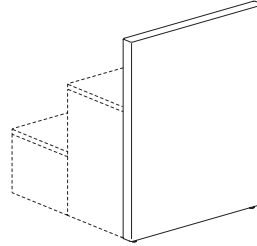
Straight - 48" Wide
2 Open & Center 2-Tote Storage
Laminate Tops on Both Tiers
48" W x 18" D x 30" H
CLDR4T2LL

Statement of Line
 (cont.)

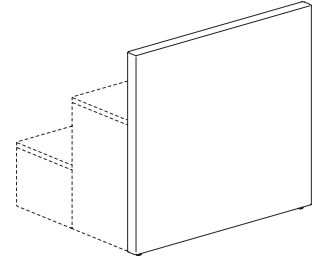
Walls



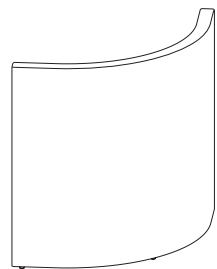
Straight - 24" Wide
 24" W x 3" D x 45" H
 CLWR2N



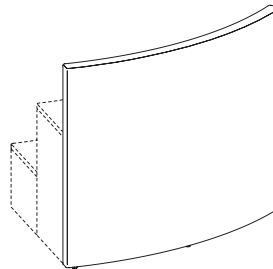
Straight - 36" Wide
 36" W x 3" D x 45" H
 CLWR3N



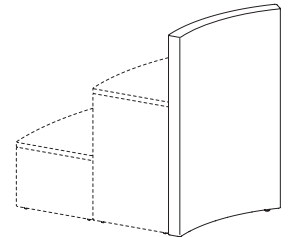
Straight - 48" Wide
 48" W x 3" D x 45" H
 CLWR4N



Inside Corner
 55 1/4" W x 3" D x 45" H
 CLWCNN

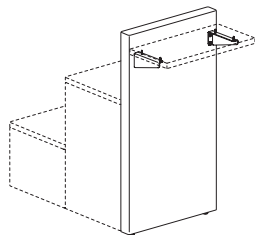


Inside Curve - 45 Degree
 58 1/2" W x 3" D x 45" H
 CLWVNN

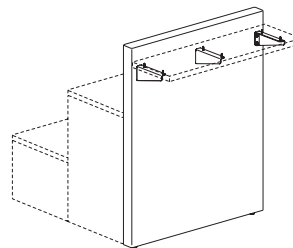


Outside Curve - 45 Degree
 29 3/4" W x 3" D x 45" H
 CLWVTN

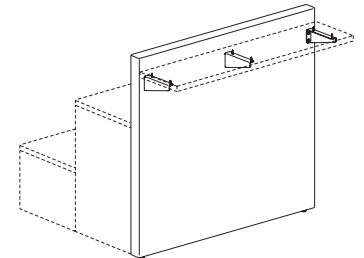
Walls with Worksurface Mount



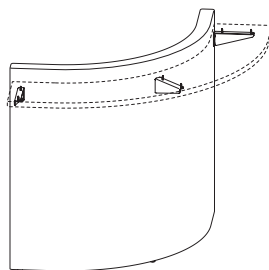
Straight - 24" Wide
 24" W x 11 1/4" D x 45" H
 CLSR2N



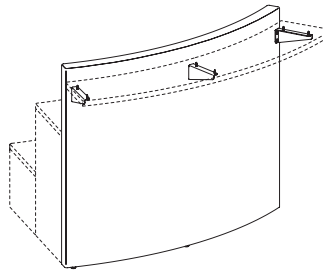
Straight - 36" Wide
 36" W x 11 1/4" D x 45" H
 CLSR3N



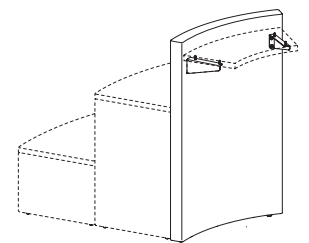
Straight - 48" Wide
 48" W x 11 1/4" D x 45" H
 CLSR4N



Inside Corner
 64 1/2" W x 11 1/4" D x 45" H
 CISCNN



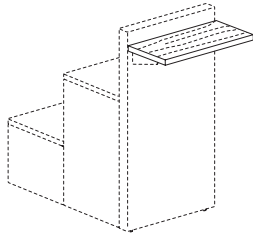
Inside Curve - 45 Degree
 61 1/2" W x 11 1/4" D x 45" H
 CLSVNN



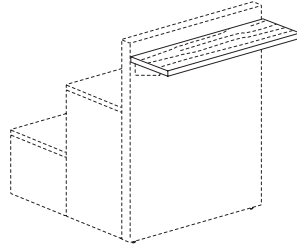
Outside Curve - 45 Degree
 29 3/4" W x 11 1/4" D x 45" H
 CLSVTN

Statement of Line
 (cont.)

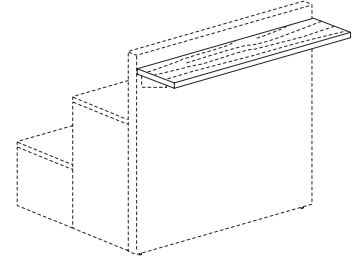
Laminate Worksurfaces



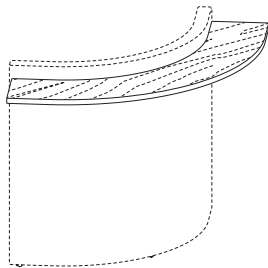
Straight - 24" Wide
 $23\frac{15}{16}$ " W x 12" D x $1\frac{1}{4}$ " H
 CLAWSRT24-74P



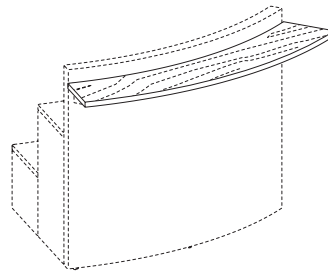
Straight - 36" Wide
 $35\frac{15}{16}$ " W x 12" D x $1\frac{1}{4}$ " H
 CLAWSRT36-74P



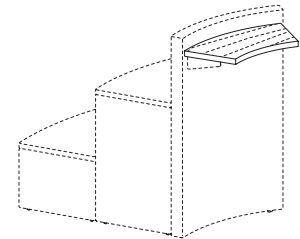
Straight - 48" Wide
 $47\frac{15}{16}$ " W x 12" D x $1\frac{1}{4}$ " H
 CLAWSRT48-74P



Inside Corner
 $71\frac{3}{4}$ " W x 12" D x $1\frac{1}{4}$ " H
 CLAWSCN-74P

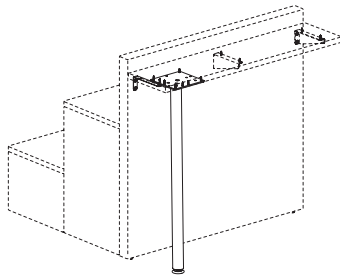


Inside Curve - 45 Degree
 $67\frac{3}{4}$ " W x 12" D x $1\frac{1}{4}$ " H
 CLAWSVN-74P



Outside Curve - 45 Degree
 27" W x 12" D x $1\frac{1}{4}$ " H
 CLAWSVT-74P

Worksurface Leg Kits



Worksurface Leg Kit
 CLAWLEG

**Planning with
Additional
Products**

Imaginasium Square Blips & Caddy

Imaginasium square blips are designed to fit and add comfort to the top of any Clamber tier. They can also be positioned on the floor to provide a ground level tier and support ground level learning.

The seat height for every tier on Clamber is 15", while Imaginasium blips have a height of 3". When utilized together they provide a standard seat height of 18".

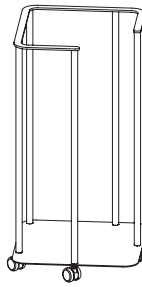
Clamber storage elements and Imaginasium caddies can be utilized to keep spaces looking neat and tidy while blips are not in use.

All open storage and planter cubbies, with the exception of the middle cubby on any 48" wide storage unit, are designed to hold three Imaginasium blips. Blips must be ordered separately.

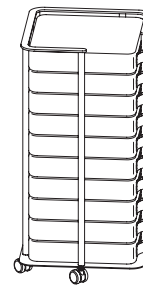
Statement of Line



Square Blip
MGBPSPAD



Square Mobile Storage Caddy
MGBPSCADDY



Square Mobile Storage Caddy
with ten Square Blips
MGBP10SPADCAD

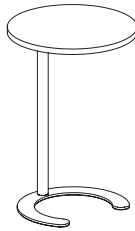
**Planning with
 Additional
 Products (cont.)**

C-Table & C-Table Max

Clamber's glide design provides a clearance of $\frac{3}{4}$ " beneath the unit, with $\frac{1}{2}$ " adjustment for floor leveling to allow for planning with C-Table & C-Table Max.

Statement of Line

C-Table Max

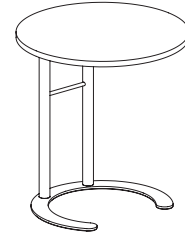


CTBL

C-Table Max



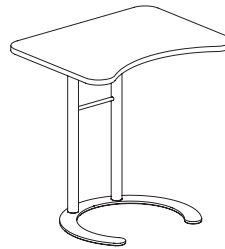
24" x 30" Rectangular Table
 CMDGA2430 (26" Fixed-Height)
 CMDAA2430 (29" Fixed-Height)
 CMDEA2430 (Adjustable-Height)



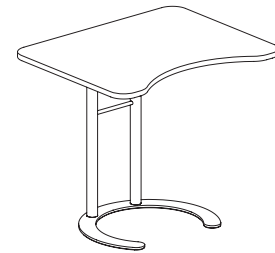
Round Table
 CMDGB24 (26" Fixed-Height)
 CMDAB24 (29" Fixed-Height)
 CMDEB24 (Adjustable-Height)



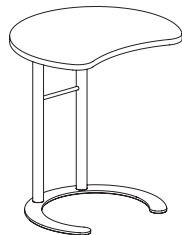
Square Table
 CMDGC26 (26" Fixed-Height)
 CMDAC26 (29" Fixed-Height)
 CMDEC26 (Adjustable-Height)



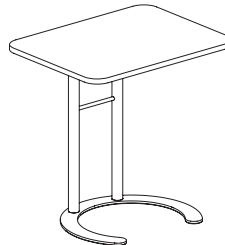
20" x 26" Rectangular Table
 with Comfort Curve
 CMDGN2026 (26" Fixed-Height)
 CMDAN2026 (29" Fixed-Height)
 CMDEN2026 (Adjustable-Height)



24" x 30" Rectangular Table
 with Comfort Curve
 CMDGN2430 (26" Fixed-Height)
 CMDAN2430 (29" Fixed-Height)
 CMDEN2430 (Adjustable-Height)



Round Table with Comfort Curve
 CMDGP24 (26" Fixed-Height)
 CMDAP24 (29" Fixed-Height)
 CMDEP24 (Adjustable-Height)

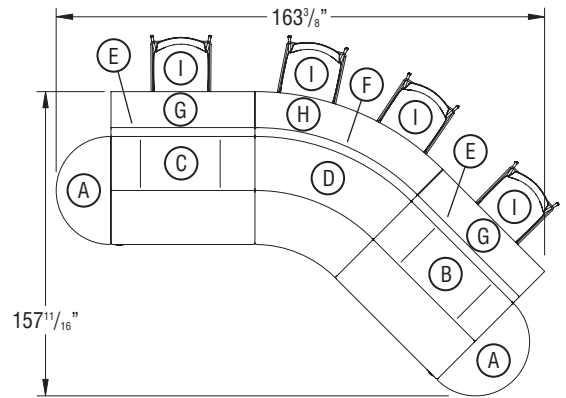
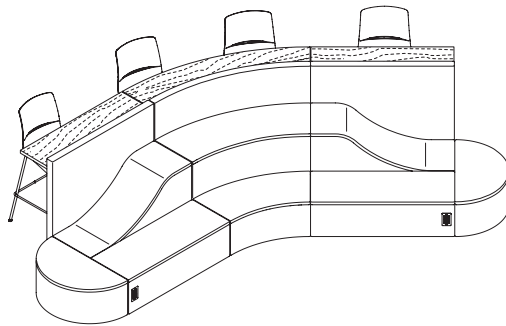


20" x 26" Rectangular Table
 CMDGA2026 (26" Fixed-Height)
 CMDAA2026 (29" Fixed-Height)
 CMDEA2026 (Adjustable-Height)

Typical Configurations

Typical Configuration 1

Item	Qty	Model	
A	2	CL1HRU	Clamber One-Tier Seating, 36" Wide, Half-Round, Fully Upholstered
B	1	CL2WLUU	Clamber Two-Tier Seating, 48" Wide, Wave Left, Fully Upholstered
C	1	CL2WRUU	Clamber Two-Tier Seating, 48" Wide, Wave Right, Fully Upholstered
D	1	CL2VNUU	Clamber Two-Tier Seating, 45 Degree, Inside Curve, Fully Upholstered
E	2	CLSR4N	Clamber Wall, 48" Wide, Straight, Fully Upholstered with Worksurface Mount*
F	1	CLSVNN	Clamber Wall, 45 Degree, Inside Curve, Fully Upholstered with Worksurface Mount
G	2	CLAWSRT48-74P	Clamber Wall, 48" Wide, Straight, Laminate Worksurface
H	1	CLAWSYN-74P	Clamber Wall, 45 Degree, Inside Curve, Laminate Worksurface
I	4	LL4100H30	Limelite Four-Leg Armless Cafe Stool, 30" High
	2	CLAGKSG	Clamber Tiered Seating Ganging Kit** (optional)
	2	CLAGKWG	Clamber Wall, Worksurface Ganging Kit** (optional)

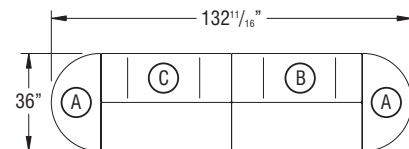
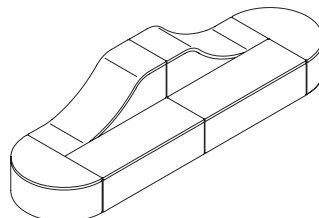


*Each Clamber wall (CLSR4) includes a tiered seating ganging plate kit (CLAGKSG). Any two-tiered seating wave - left (CL2WL), wave - right (CL2WR), and wall with worksurface - straight - 48" wide (CLSR4 & CLAWSRT48) must be ganged to another two-tiered seating unit, side-by-side.

**Tiered seating ganging plate kits (CLAGKSG) and worksurface ganging kits (CLAGKWG) are also available separately for connecting additional units together.

Typical Configuration 2

Item	Qty	Model	
A	2	CL1HRU	Clamber One-Tier Seating, 36" Wide, Half-Round, Fully Upholstered
B	1	CL2WLUU	Clamber Two-Tier Seating, 48" Wide, Wave Left, Fully Upholstered
C	1	CL2WRUU	Clamber Two-Tier Seating, 48" Wide, Wave Right, Fully Upholstered
	3	CLAGKSG	Clamber Tiered Seating Ganging Kit* (optional)

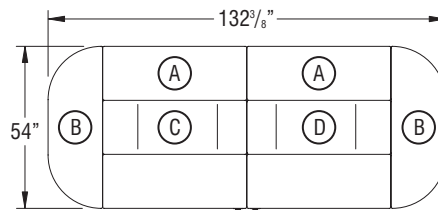
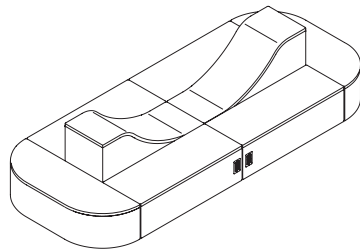


*Tiered seating ganging plate kits (CLAGKSG) are available separately for connecting units together.

Typical
 Configurations
 (cont.)

Typical Configuration 3

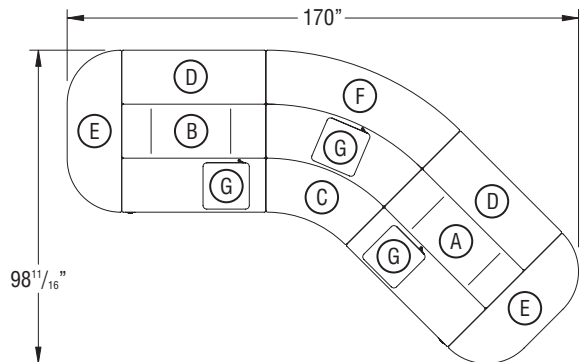
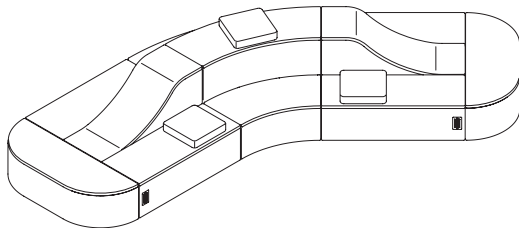
Item	Qty	Model	
A	2	CL1R4U	Clamber One-Tier Seating, 48" Wide, Straight, Fully Upholstered
B	2	CL1HVU	Clamber One-Tier Seating, 54" Wide, Half-Oval, Fully Upholstered
C	1	CL2WLUU	Clamber Two-Tier Seating, 48" Wide, Wave Left, Fully Upholstered
D	1	CL2WRUU	Clamber Two-Tier Seating, 48" Wide, Wave Right, Fully Upholstered
	4	CLAGKSG	Clamber Tiered Seating Ganging Kit* (optional)



*Tiered seating ganging plate kits (CLAGKSG) are available separately for connecting units together.

Typical Configuration 4

Item	Qty	Model	
A	1	CL2WLUU	Clamber Two-Tier Seating, 48" Wide, Wave Left, Fully Upholstered
B	1	CL2WRUU	Clamber Two-Tier Seating, 48" Wide, Wave Right, Fully Upholstered
C	1	CL2VNUU	Clamber Two-Tier Seating, 45 Degree, Inside Curve, Fully Upholstered
D	2	CL1R4U	Clamber One-Tier Seating, 48" Wide, Straight, Fully Upholstered
E	2	CL1HVU	Clamber One-Tier Seating, 54" Wide, Half-Oval, Fully Upholstered
F	1	CL1VNU	Clamber One-Tier Seating, 45 Degree, Inside Curve, Fully Upholstered
G	3	MGBPSPAD	Imaginasium Square Blips
	6	CLAGKSG	Clamber Tiered Seating Ganging Kit* (optional)

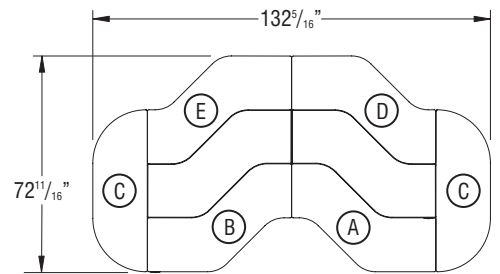
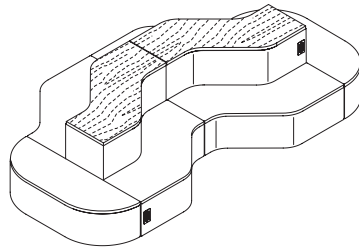


*Tiered seating ganging plate kits (CLAGKSG) are available separately for connecting units together.

Typical Configurations (cont.)

Typical Configuration 5

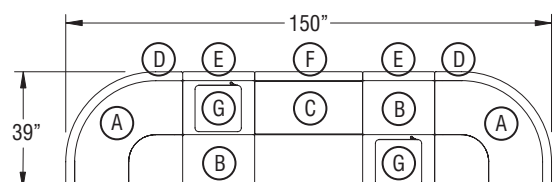
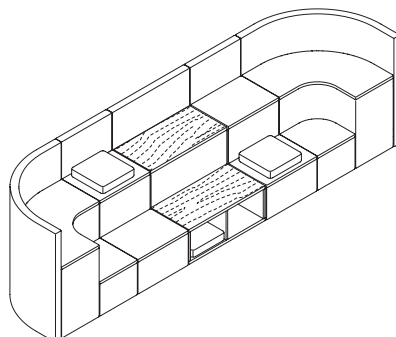
Item	Qty	Model	
A	1	CL2SLUL	Clamber Two-Tier Seating, 48" Wide, S-Curve Left, Laminate Top on Upper Tier
B	1	CL2SRUL	Clamber Two-Tier Seating, 48" Wide, S-Curve Right, Laminate Top on Upper Tier
C	2	CL1HVU	Clamber One-Tier Seating, 54" Wide, Half-Oval, Fully Upholstered
D	1	CL1SLU	Clamber One-Tier Seating, 48" Wide, S-Curve Left, Fully Upholstered
E	1	CL1SRU	Clamber One-Tier Seating, 48" Wide, S-Curve Right, Fully Upholstered
	4	CLAGKSG	Clamber Tiered Seating Ganging Kit* (optional)



*Tiered seating ganging plate kits (CLAGKSG) are available separately for connecting units together.

Typical Configuration 6

Item	Qty	Model	
A	2	CL2CNUU	Clamber Two-Tier Seating, Inside Corner, Fully Upholstered
B	2	CL2R2UU	Clamber Two-Tier Seating, 24" Wide, Straight, Fully Upholstered
C	1	CLDR3LL	Clamber Two-Tier Seating, 36" Wide, Straight, Two Open Storage, Laminate Top
D	2	CLWCNN	Clamber Wall, Inside Corner, Fully Upholstered
E	2	CLWR2N	Clamber Wall, 24" Wide, Straight, Fully Upholstered
F	1	CLWR3N	Clamber Wall, 36" Wide, Straight, Fully Upholstered
G	3	MGBPSPAD	Imaginasium Square Blips
	2	CLAGKSG	Clamber Tiered Seating Ganging Kit* (optional)
	2	CLAGKSTG	Clamber Storage Ganging Kit* (optional)

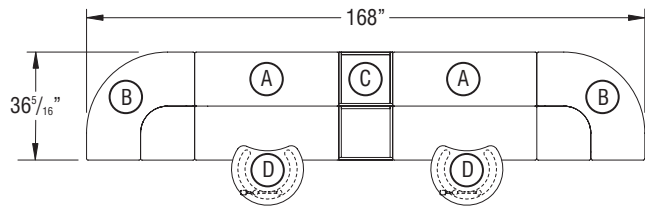
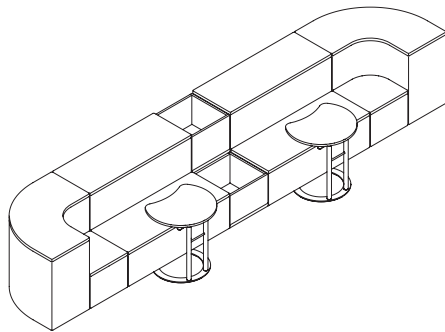


*Tiered seating ganging plate kits (CLAGKSG) and tiered seating glide ganging kits (CLAGKSTG) are available separately for connecting units together.

Typical Configurations
 (cont.)

Typical Configuration 7

Item	Qty	Model	
A	2	CL2R4UU	Clamber Two-Tier Seating, 48" Wide, Straight, Fully Upholstered
B	2	CL2CNUU	Clamber Two-Tier Seating, Inside Corner, Fully Upholstered
C	1	CLDR1PP	Clamber Two-Tier Seating, 18" Wide, Straight, Two Planters*
D	2	CMDEP24	C-Table Max Adjustable-Height - Round with Curve Top
	1	CLAGKSG	Clamber Tiered Seating Ganging Kit** (optional)
	1	CLAGKSTG	Clamber Storage Ganging Kit*** (optional)



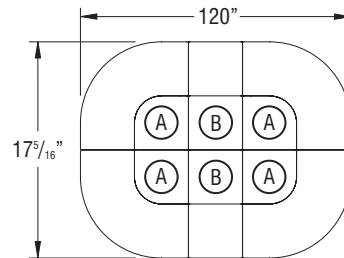
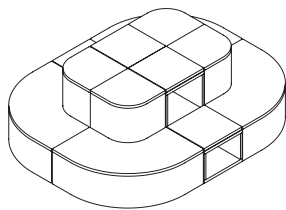
*Each Clamber two-tiered, 18" wide, straight, two planter unit (CLDR1PP) includes a tiered seating glide ganging kit (CLAGKSTG) and must be ganged to another two-tiered seating unit, side-by-side.

**Tiered seating ganging plate kits (CLAGKSG) are available separately for connecting units together.

***Additional tiered seating ganging plate kits (CLAGKSG) and tiered seating glide ganging kits (CLAGKSTG) are available separately for connecting units together.

Typical Configuration 8

Item	Qty	Model	
A	4	CL2CTUU	Clamber Two-Tier Seating, Outside Corner, Fully Upholstered
B	2	CLDR1UU	Clamber Two-Tier Seating, 18" Wide, Straight, Three Open Storage, Dual-Sided, Fully Upholstered*
	2	CLAGKSG	Clamber Tiered Seating Ganging Kit** (optional)



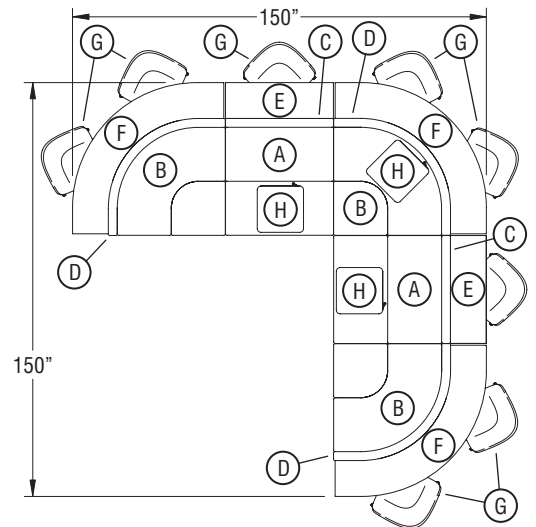
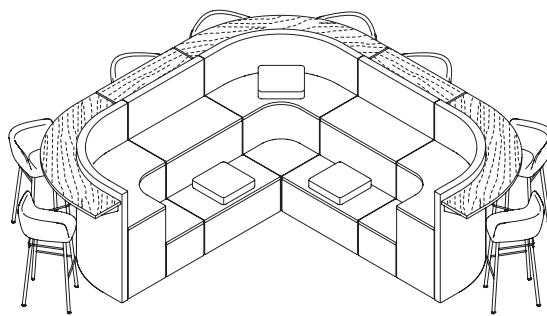
*Each Clamber two-tiered seating, 18" wide, straight, three open storage unit (CLDR1UU) includes a tiered seating glide ganging kits (CLAGKSTG) and must be ganged to another two-tiered seating unit, side-by-side.

**Tiered seating ganging plate kits (CLAGKSG) are available separately for connecting units together.

Typical
 Configurations
 (cont.)

Typical Configuration 9

Item	Qty	Model	
A	2	CL2R3UU	Clamber Two-Tier Seating, 36" Wide, Straight, Fully Upholstered
B	3	CL2CNUU	Clamber Two-Tier Seating, Inside Corner, Fully Upholstered
C	2	CLSR3N	Clamber Wall, 36" Wide, Straight, Fully Upholstered with Worksurface Mount*
D	3	CLSCNN	Clamber Wall, Inside Corner, Fully Upholstered with Worksurface Mount
E	2	CLAWSRT36-74P	Clamber Wall, 36" Wide, Straight, Laminate Worksurface
F	3	CLAWSCN-74P	Clamber Wall, Inside Corner, Laminate Worksurface
G	8	CA470030	Calida Four-Leg Stools, 30" High
H	3	MGBPSPAD	Imaginasium Square Blips
	2	CLAGKSG	Clamber Tiered Seating Ganging Kit** (optional)
	4	CLAGKWG	Clamber Wall, Worksurface Ganging Kit** (optional)



*Each Clamber wall (CLSR3N) includes a tiered seating ganging plate kit (CLAGKSG). Any, two-tiered seating, straight - 36" wide (CL2R3) and wall with work surface - straight - 36" wide (CLSR3) must be ganged to another two-tiered seating unit, side-by-side.

**Tiered seating ganging plate kits (CLAGKSG) and worksurface ganging kits (CLAGKWG) are available separately for connecting units together.

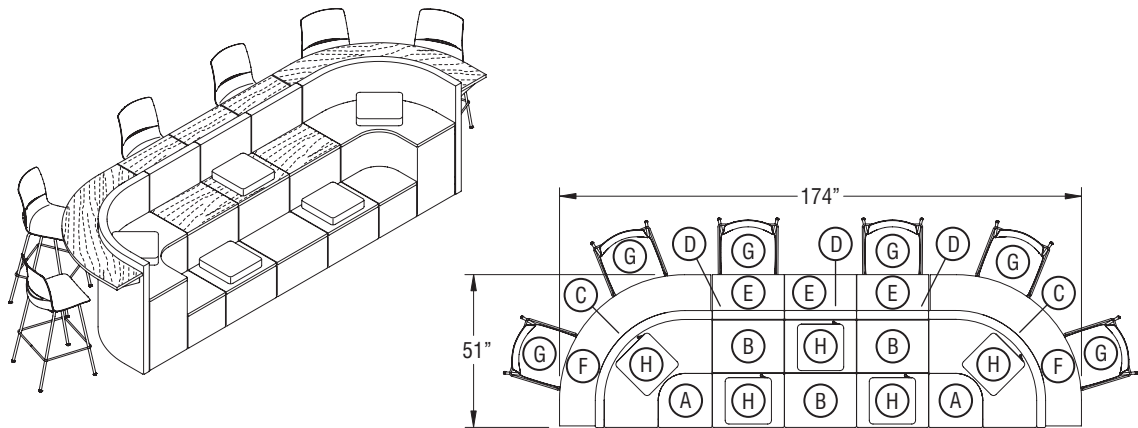
Clamber™ Tiered Seating - Introduction

Planning Guide

Typical Configurations (cont.)

Typical Configuration 10

Item	Qty	Model	
A	2	CL2CNUU	Clamber Two-Tier Seating, Inside Corner, Fully Upholstered
B	3	CL2R2UL	Clamber Two-Tier Seating, 24" Wide, Straight, Laminate Top on Upper Tier
C	2	CLSCNN	Clamber Wall, Inside Corner, Fully Upholstered with Worksurface Mount
D	3	CLSR2N	Clamber Wall, 24" Wide, Straight, Fully Upholstered with Worksurface Mount*
E	3	CLAWSRT24-74P	Clamber Wall, 24" Wide, Straight, Laminate Worksurface
F	2	CLAWSCN-74P	Clamber Wall, Inside Corner, Laminate Worksurface
G	6	LL4100H30	Limelite Four-Leg Armless Cafe Stool, 30" High
H	5	MGBPSPAD	Imaginasium Square Blips
I		CLAGKSG	Clamber Tiered Seating Ganging Kit** (optional)
	4	CLAGKWG	Clamber Wall, Worksurface Ganging Kit** (optional)



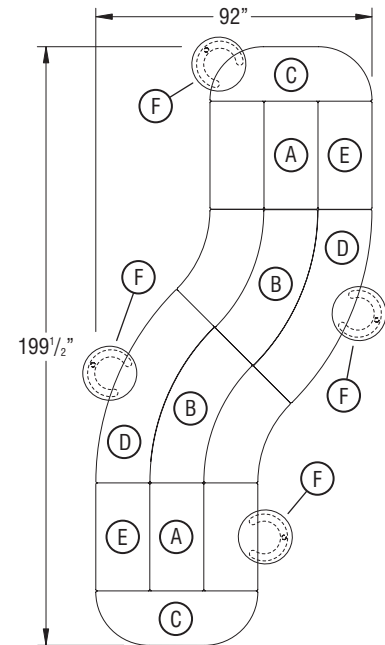
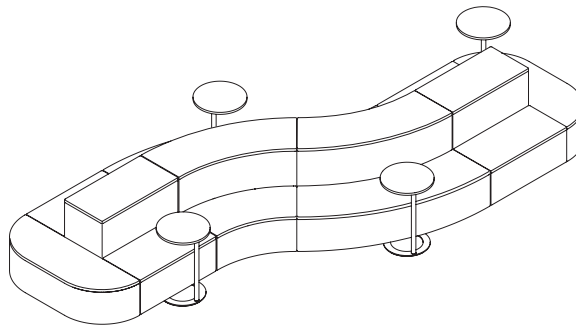
*Each Clamber wall (CLSR2N) includes a tiered seating ganging plate kit (CLAGKSG). Any two-tiered seating, straight - 24" wide (CL2R2) and wall with work surface - straight - 24" wide (CLSR2) must be ganged to another two-tiered seating unit, side-by-side.

**Tiered seating ganging plate kits (CLAGKSG) and work surface ganging kits (CLAGKWG) are available separately for connecting units together.

Typical Configurations
 (cont.)

Typical Configuration 11

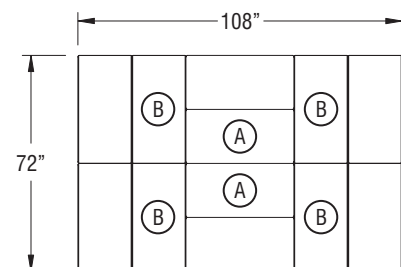
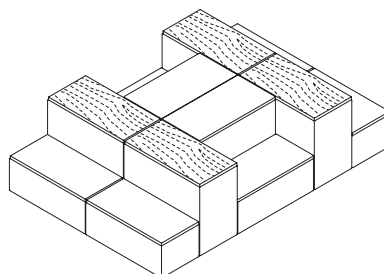
Item	Qty	Model	
A	2	CL2R3UU	Clamber Two-Tier Seating, 36" Wide, Straight, Fully Upholstered
B	2	CL2VNUU	Clamber Two-Tier Seating, 45 Degree, Inside Curve, Fully Upholstered
C	2	CL1HVU	Clamber One-Tier Seating, 54" Wide, Half-Oval, Fully Upholstered
D	2	CL1VNU	Clamber One-Tier Seating, 45 Degree, Inside Curve, Fully Upholstered
E	2	CL1R3U	Clamber One-Tier Seating, 36" Wide, Straight, Fully Upholstered
F	4	CTABLE	C-Table, Personal Worksurface
	8	CLAGKSG	Clamber Tiered Seating Ganging Kit* (optional)



*Tiered seating ganging plate kits (CLAGKSG) are available separately for connecting units together.

Typical Configuration 12

Item	Qty	Model	
A	2	CL2R3UU	Clamber Two-Tier Seating, 36" Wide, Straight, Fully Upholstered
B	4	CL2R3UL	Clamber Two-Tier Seating, 36" Wide, Straight, Laminate Top on Upper Tier
	4	CLAGKSG	Clamber Tiered Seating Ganging Kit* (optional)

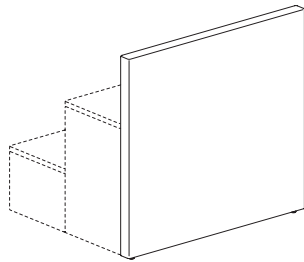


*Tiered seating ganging plate kits (CLAGKSG) are available separately for connecting units together.

Clamber Wall Guidelines

Planning Guidelines

- Must be field installed on correlating Clamber two-tiered seating.
- Correlating Clamber two-tiered seating must be ordered separately.
- Two-tiered seating units will ship without pre-cut holes required to accept a wall unit. Installer must cut the holes. Wall units will ship with the pre-cut holes required to accept correlating two-tiered units. See Clamber Tiered Seating - Assembly Instructions (KI-AI-000203) for more information.
- Wall units come with necessary mounting hardware.
- Basic tools are required for assembly.
- Side-to-side ganging of another two-tiered seating unit is optional but recommended. Tiered seating ganging kits are ordered separately (CLAGKSG).
- Due to variations in foam and upholstery in the manufacturing process, all units have a dimensional tolerance of up to $+1/4$ " (width & depth) when fitting together, or into spaces. The tolerance is compounded as more units are added into a configuration. For example: Two 48" units side-to-side should factor in a possible overall width of $96\frac{1}{2}$ " ($+1/4$ " per unit).

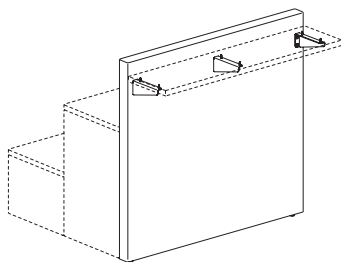


(CLWR4N shown)

Clamber Wall with Worksurface Mount Guidelines

Planning Guidelines

- Includes wall & mounting hardware.
- Basic tools are required for assembly.
- Mounting hardware is field installed.
- Worksurface must be ordered separately and field installed.
- Wall must be installed on correlating two-tiered seating, which must be ordered separately.
- Two-tiered seating units will ship without pre-cut holes required to accept a wall unit. Installer must cut the holes. Wall units will ship with pre-cut holes required to accept worksurface mounts and correlating two-tiered units. See Clamber Tiered Seating - Assembly Instructions (KI-AI-000203) for more information.
- Side-to-side ganging of another two-tiered seating unit is generally optional, and kits are ordered separately (CLAGKSG). Three cases exist where tiered seating ganging is required to ensure stability (see page 34). When required, ganging kits are included with the wall with worksurface mount unit.
- Worksurface ganging is recommended, and ordered separately to join together and level worksurfaces that are planned side-by-side.
- Worksurfaces are installed at a height of 42" to be paired with stools that have a seat height of 30".
- Installed worksurfaces will have a nominal gap between them when centered on the wall unit. This gap could be up to $1/2$ " between worksurfaces. If the customer desires to minimize or close the gap between worksurfaces, this is covered in the assembly instructions.
- Due to variations in foam and upholstery in the manufacturing process, all units have a dimensional tolerance of up to $+1/4$ " (width & depth) when fitting together, or into spaces. The tolerance is compounded as more units are added into a configuration. For example: Two 48" units side-to-side should factor in a possible overall width of $96\frac{1}{2}$ " ($+1/4$ " per unit).

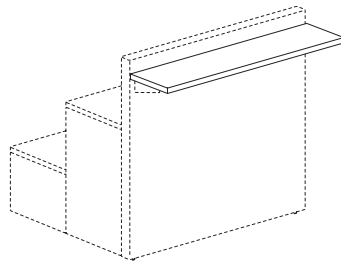


(CLSR4N shown)

Clamber Wall Laminate Worksurface Guidelines

Planning Guidelines

- Includes worksurface **ONLY**.
- Mounting hardware is included with correlating wall with worksurface mount which must be ordered separately and is field installed.
- Basic tools are required for assembly.
- Worksurface ganging is recommended and ordered separately to join together and level worksurfaces that are planned side-by-side.

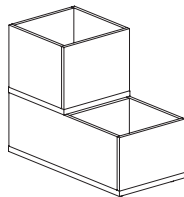


(CLAWSRT48-74P shown)

Clamber Planter Guidelines

Planning Guidelines

- Not intended for use with live plants.
- A liner is required when using this product with live plants.
- Plants and liners purchased separately.
- Recommended liner size: 16.25" wide by 16.25" deep by 11.75" high.



Units with Planters

CLDR1PP

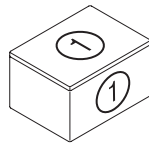
Specifying Top & Base Material

Planning Guidelines

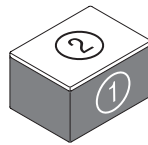
- Clamber tiered seating units may be specified to have non-contrast upholstery (entire unit – same covering), or with upholstery contrast (different covering on tier top(s)).

Clamber One-Tier Seating can be specified as:

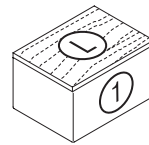
- A. Upholstered Top, Non-contrast** - One upholstery selection for the entire unit.
- B. Upholstered Top, Contrast** - Two upholstery selections: Selection one for the base of the unit, and selection two for the top.
- C. Laminate Top** - One upholstery selection on the base of the unit. One laminate selection for the top with 74P edge.



A. Upholstered Top, Non-Contrast
 (one-tier seating,
 24" wide - straight shown)



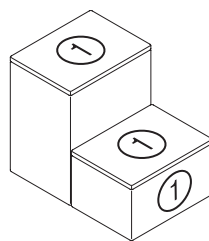
B. Upholstered Top, Contrast
 (one-tier seating,
 24" wide - straight shown)



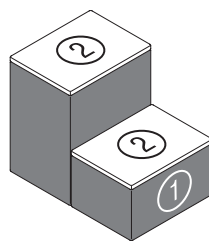
C. Laminate Top
 (one-tier seating,
 24" wide - straight shown)

Clamber Two-Tiered Seating can be specified as:

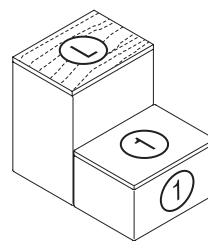
- A. Upholstered Top on Both Tiers, Non-contrast** – One upholstery selection for the entire unit.
- B. Upholstered Top on Both Tiers, Contrast** – Two upholstery selections: Selection one for the base of the unit and selection two for both tier tops.
- C. Laminate Top on Upper Tier, Upholstery Non-contrast** – One upholstery selection for both the base of the unit and the lower-tier top. One laminate selection for the upper-tier top with 74P edge.
- D. Laminate Top on Upper Tier, Upholstery Contrast** – Two upholstery selections: Selection one for the base of the unit and selection two for the lower-tier top. One laminate selection for the upper-tier top with 74P edge.
- E. Laminate Top on Lower Tier, Upholstery Non-contrast** – One upholstery selection for both the base of the unit and the upper-tier top. One laminate selection for the lower-tier top with 74P edge.
- F. Laminate Top on Lower Tier, Upholstery Contrast** – Two upholstery selections: Selection one for the base of the unit and selection two for the upper-tier top. One laminate selection for the lower-tier top with 74P edge.
- G. Laminate Top on Both Tiers, Upholstery Non-contrast** – One upholstery selection for the base of the unit. One laminate selection for both tier tops with 74P edge.



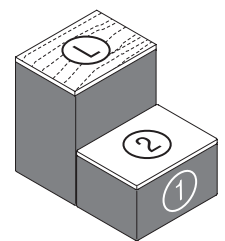
A. Upholstered Top on both Tiers, Non-Contrast
 (two-tier seating,
 24" wide - straight shown)



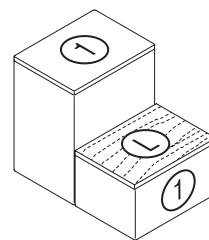
B. Upholstered Top on both Tiers, Contrast
 (two-tier seating,
 24" wide - straight shown)



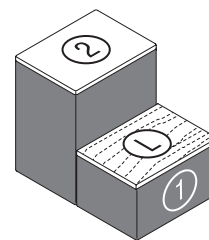
C. Laminate Top on Upper Tier, Upholstered Top on Lower Tier, Non-Contrast
 (two-tier seating,
 24" wide - straight shown)



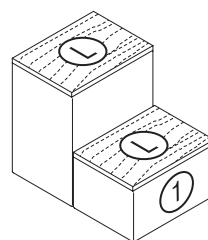
D. Laminate Top on Upper Tier, Upholstered Top on Lower Tier, Non-Contrast
 (two-tier seating,
 24" wide - straight shown)



E. Upholstered Top on Upper Tier, Laminate Top on Lower Tier, Non-Contrast
 (two-tier seating,
 24" wide - straight shown)



F. Upholstered Top on Upper Tier, Laminate Top on Lower Tier, Contrast
 (two-tier seating,
 24" wide - straight shown)



G. Laminate Top on both Tiers, Non-Contrast
 (two-tier seating,
 24" wide - straight shown)

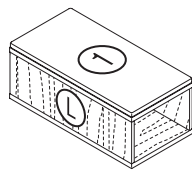
**Specifying Top
 & Base Material
 (cont.)**

Planning Guidelines

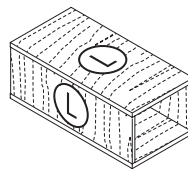
- Clamber seating units with storage may be specified with upholstered or laminate tops. The base of the storage unit is always laminate.

Clamber One-Tier Seating with Storage (18" Wide - Straight) can be specified as:

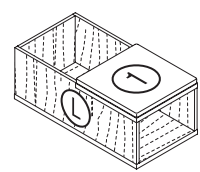
- A. Upholstered Top** - One upholstered selection for the top. One laminate selection for the base of the unit.
- B. Laminate Top** - One laminate selection for the top with 74P edge. The base laminate will match the top laminate selection.
- C. Upholstered Top & Planter** - One upholstered selection for the top. One laminate selection for the base of the unit.
- D. Laminate Top & Planter** - One laminate selection for the top with 74P edge. The base laminate will match the top laminate selection.



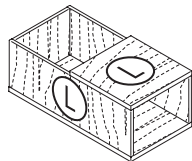
A. Two Open Storage, Dual-Sided Upholstered Top



B. Two Open Storage, Dual-Sided Laminate Top



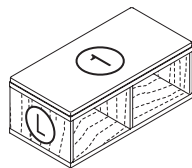
C. One Open Storage, Planter on Lower Tier, Upholstered Top



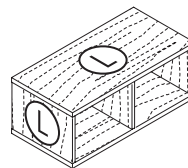
D. One Open Storage, Planter on Lower Tier, Laminate Top

Clamber One-Tier Seating with Storage (36" Wide - Straight) can be specified as:

- A. Upholstered Top** - One upholstered selection for the top. One laminate selection for the base of the unit.
- B. Laminate Top** - One laminate selection for the top with 74P edge. The base laminate will match the top laminate selection.



A. Two Open Storage Upholstered Top



B. Two Open Storage Laminate Top

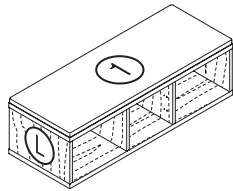
**Specifying Top
 & Base Material
 (cont.)**

Planning Guidelines

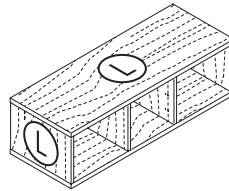
- Clamber seating units with storage may be specified with upholstered or laminate tops. The base of the storage unit is always laminate.

Clamber One-Tier Seating with Storage (48" Wide - Straight) can be specified as:

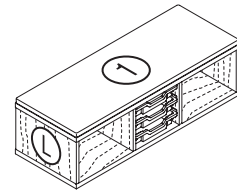
- A. Upholstered Top** - One upholstered selection for the top. One laminate selection for the base of the unit.
- B. Laminate Top** - One laminate selection for the top with 74P edge. The base laminate will match the top laminate selection.
- C. Upholstered Top & 3-Tote Storage** - One upholstered selection for the top. Laminate selection for the base of the unit. Three 3" high totes located in the center cubby of the unit.
- D. Laminate Top & 3-Tote Storage** - One laminate selection for the top with 74P edge. The base laminate will match the top laminate selection. Three 3" high totes located in the center cubby of the unit.
- E. Upholstered Top & 2-Tote Storage** - One upholstered selection for the top. One laminate selection on the base of the unit. One 3" high tote, and one 6" high tote located in the center cubby of the unit.
- F. Laminate Top & 2-Tote Storage** - One laminate selection for the top with 74P edge. The base laminate will match the top laminate selection. One 3" high tote, and one 6" high tote located in the center cubby of the unit.



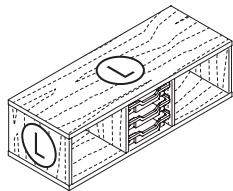
**A. Three Open Storage
 Upholstered Top**



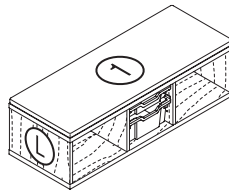
**B. Three Open Storage
 Laminate Top**



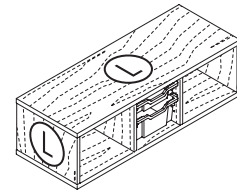
**C. Two Open & Center 3-Tote Storage
 Upholstered Top**



**D. Two Open & Center 3-Tote Storage
 Laminate Top**



**E. Two Open & Center 2-Tote Storage
 Upholstered Top**



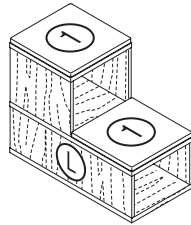
**F. Two Open & Center 2-Tote Storage
 Laminate Top**

Specifying Top & Base Material (cont.)

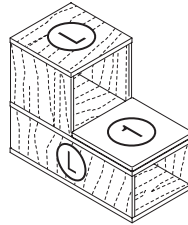
Planning Guidelines

Clamber Two-Tiered Seating with Storage (18" Wide - Straight) can be specified as:

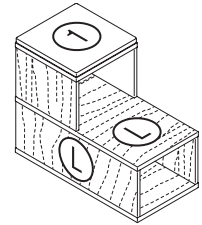
- A. Upholstered Top on Both Tiers** - One upholstery selection for both tier tops. One laminate selection for the base of the unit.
- B. Laminate Top on Upper Tier** - One upholstery selection for the lower-tier top. One laminate selection for the upper-tier top with 74P edge. The base laminate will match the top laminate selection.
- C. Laminate Top on Lower Tier** - One upholstery selection for the upper-tier top. One laminate selection for the lower-tier top with 74P edge. The top laminate selection will match the base.
- D. Laminate Top on Both Tiers** - One laminate selection for both tier tops with 74P edge. The base laminate will match the top laminate selection.
- E. Upholstered Top & Planter** - One upholstery selection for the lower-tier top. One laminate selection for the base of the unit.
- F. Laminate Top & Planter** - One laminate selection for the lower-tier top. The base laminate will match the top laminate selection.
- G. Two Planters** - One laminate selection for the entire unit.



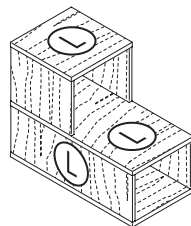
A. Three Open Storage, Dual-Sided Upholstered Top on both Tiers



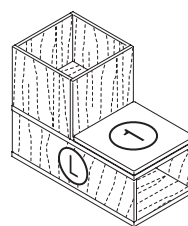
B. Three Open Storage, Dual-Sided Laminate Top on Upper Tier, Upholstered Top on Lower Tier



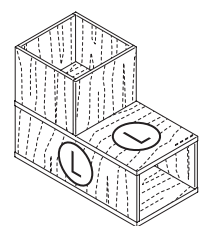
C. Three Open Storage, Dual-Sided Upholstered Top on Upper Tier, Laminate Top on Lower Tier



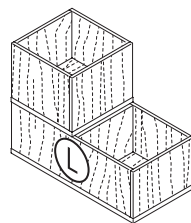
D. Three Open Storage, Dual-Sided Laminate Top on both Tiers



E. Two Open Storage, Dual-Sided Planter on Upper Tier, Upholstered Top on Lower Tier



F. Two Open Storage, Dual-Sided Planter on Upper Tier, Laminate Top on Lower Tier



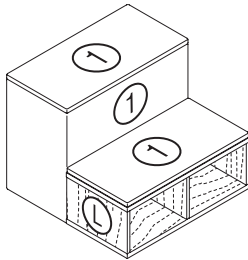
G. Planter on both Tiers

Specifying Top & Base Material (cont.)

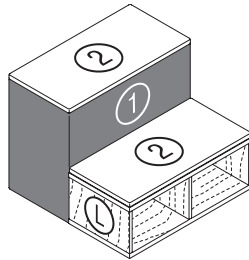
Planning Guidelines

Clamber Two-Tiered Seating with Storage (36" Wide - Straight) can be specified as:

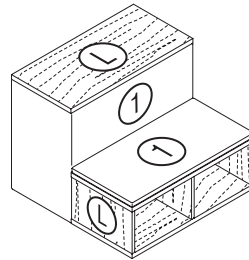
- A. Upholstered Top on Both Tiers, Non-contrast** - One upholstery selection for the upper-tier base and both tier tops. One laminate selection for the lower-tier base.
- B. Upholstered Top on Both Tiers, Contrast** - Two upholstery selections: Selection one for the upper-tier base and selection two for both tier tops. One laminate selection for the lower-tier base.
- C. Laminate Top on Upper Tier, Non-contrast** - One upholstery selection for the upper-tier base and lower-tier top. One laminate selection for the upper-tier top with 74P edge. The lower-tier base laminate will match the top laminate selection.
- D. Laminate Top on Upper Tier, Contrast** - Two upholstery selections: Selection one for the upper-tier base and selection two for lower-tier top. One laminate selection for the top with 74P edge. The lower-tier base laminate will match the top laminate selection.
- E. Laminate Top on Lower Tier, Non-contrast** - One upholstery selection for the upper-tier base and upper-tier top. One laminate selection for the top with 74P edge. The lower-tier base laminate will match the top laminate selection.
- F. Laminate Top on Lower Tier, Contrast** - Two upholstery selections: Selection one for the upper-tier base and selection two for upper-tier top. One laminate selection for the top with 74P edge. The lower-tier base laminate will match the top laminate selection.
- G. Laminate Top on Both Tiers** - One upholstery selection for the upper-tier base. One laminate selection for both tier tops with 74P edge. The lower-tier base laminate will match the top laminate selection.



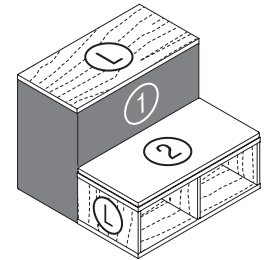
A. Two Open Storage Upholstered Top on both Tiers, Non-Contrast



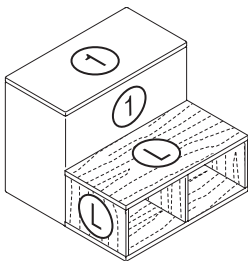
B. Two Open Storage Upholstered Top on both Tiers, Contrast



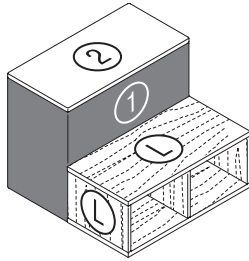
C. Two Open Storage Laminate Top on Upper Tier, Upholstered Top on Lower Tier, Non-Contrast



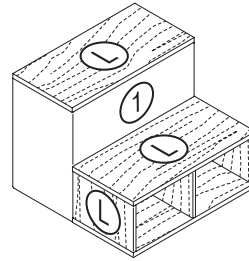
D. Two Open Storage Laminate Top on Upper Tier, Upholstered Top on Lower Tier, Contrast



E. Two Open Storage Upholstered Top on Upper Tier, Laminate Top on Lower Tier, Non-Contrast



F. Two Open Storage Upholstered Top on Upper Tier, Laminate Top on Lower Tier, Contrast



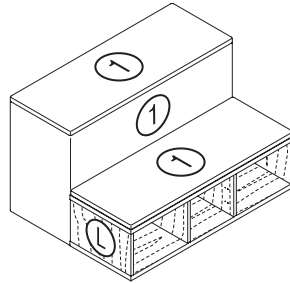
G. Two Open Storage Laminate Top on both Tiers

Specifying Top & Base Material (cont.)

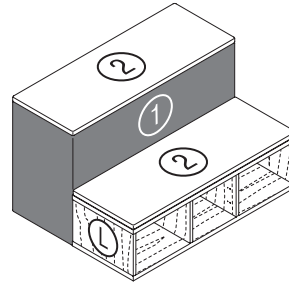
Planning Guidelines

Clamber Two-Tiered Seating with Storage (48" Wide - Straight) can be specified as:

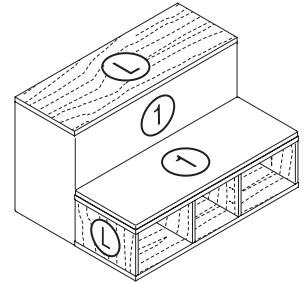
- A. Upholstered Top on Both Tiers, Non-contrast** - One upholstery selection for the upper-tier base and both tier tops. One laminate selection for the lower-tier base.
- B. Upholstered Top on Both Tiers, Contrast** - Two upholstery selections: Selection one for the upper-tier base and selection two for both tier tops. One laminate selection for the lower-tier base.
- C. Laminate Top on Upper Tier, Non-contrast** - One upholstery selection for the upper-tier base and lower-tier top. One laminate selection for the upper-tier top with 74P edge. The lower-tier base laminate will match the top laminate selection.
- D. Laminate Top on Upper Tier, Contrast** - Two upholstery selections: Selection one for the upper-tier base and selection two for lower-tier top. One laminate selection for the upper-tier top with 74P edge. The lower-tier base laminate will match the top laminate selection.
- E. Laminate Top on Lower Tier, Non-contrast** - One upholstery selection for the upper-tier base and upper-tier top. One laminate selection for the lower-tier top with 74P edge. The lower-tier base laminate will match the top laminate selection.
- F. Laminate Top on Lower Tier, Contrast** - Two upholstery selections: Selection one for the upper-tier base and selection two for upper-tier top. One laminate selection for the lower-tier top with 74P edge. The lower-tier base laminate will match the top laminate selection.
- G. Laminate Top on Both Tiers** - One upholstery selection for the upper-tier base. One laminate selection for both tier tops with 74P edge color selection. The lower-tier base laminate will match the top laminate selection.



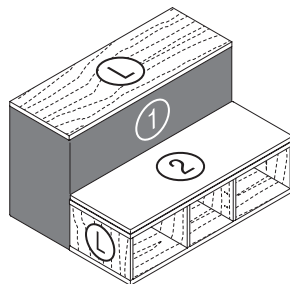
**A. Three Open Storage
 Upholstered Top on both Tiers,
 Non-Contrast**



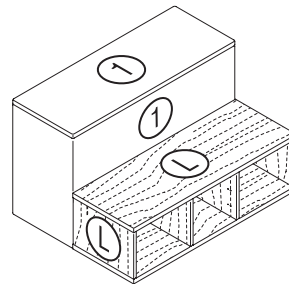
**B. Three Open Storage
 Upholstered Top on both Tiers,
 Contrast**



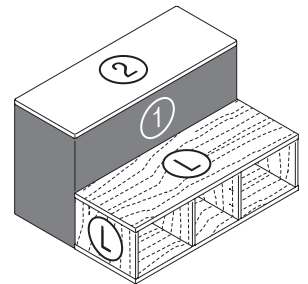
**C. Three Open Storage
 Laminate Top on Upper Tier,
 Upholstered Top on Lower Tier,
 Non-Contrast**



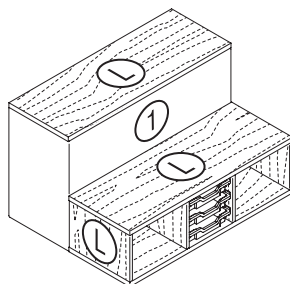
**D. Three Open Storage
 Laminate Top on Upper Tier,
 Upholstered Top on Lower Tier,
 Contrast**



**E. Three Open Storage
 Upholstered Top on Upper Tier,
 Laminate Top on Lower Tier,
 Non-Contrast**



**F. Three Open Storage
 Upholstered Top on Upper Tier,
 Laminate Top on Lower Tier,
 Contrast**



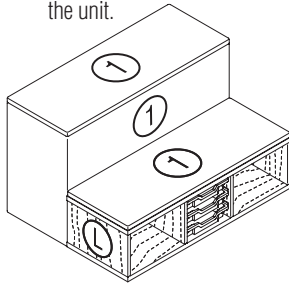
**N. Two Open & Center 3-Tote Storage
 Laminate Top on both Tiers**

Specifying Top
 & Base Material
 (cont.)

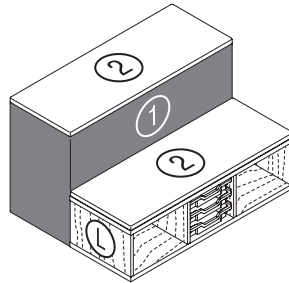
Planning Guidelines

Clamber Two-Tiered Seating with Storage (48" Wide - Straight with 3-Tote Storage) can be specified as:

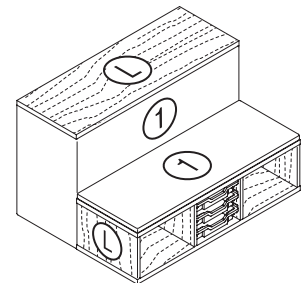
- H. Upholstered Top on Both Tiers, Non-contrast** - One upholstery selection for the upper-tier base and both tier tops. One laminate selection for the lower-tier base. Three 3" high totes located in the center cubby of the unit.
- I. Upholstered Top on Both Tiers, Contrast** - Two upholstery selections: Selection one for the upper-tier base and selection two for both tier tops. One laminate selection for the lower-tier base. Three 3" high totes located in the center cubby of the unit.
- J. Laminate Top on Upper Tier, Non-contrast** - One upholstery selection for the upper-tier base and lower-tier top. One laminate selection for the upper-tier top with 74P edge. The lower-tier base laminate will match the top laminate selection. Three 3" high totes located in the center cubby of the unit.
- K. Laminate Top on Upper Tier, Contrast** - Two upholstery selections: Selection one for the upper-tier base and selection two for lower-tier top. One laminate selection for the upper-tier top with 74P edge. The lower-tier base laminate will match the top laminate selection. Three 3" high totes located in the center cubby of the unit.
- L. Laminate Top on Lower Tier, Non-contrast** - One upholstery selection for the upper-tier base and upper-tier top. One laminate selection for the lower-tier top with 74P edge. The lower-tier base laminate will match the top laminate selection. Three 3" high totes located in the center cubby of the unit.
- M. Laminate Top on Lower Tier, Contrast** - Two upholstery selections: Selection one for the upper-tier base and selection two for upper-tier top. One laminate selection for the lower-tier top with 74P edge. The lower-tier base laminate will match the top laminate selection. Three 3" high totes located in the center cubby of the unit.
- N. Laminate Top on Both Tiers** - One upholstery selection for the upper-tier base. One laminate selection for both tier tops with 74P edge. The lower-tier base laminate will match the top laminate selection. Three 3" high totes located in the center cubby of the unit.



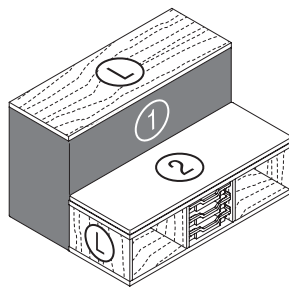
**H. Two Open & Center 3-Tote Storage
 Upholstered Top on both Tiers, Non-Contrast**



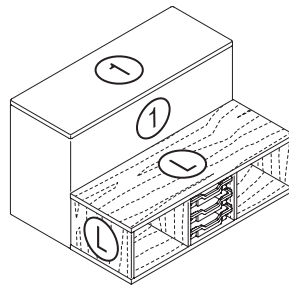
**I. Two Open & Center 3-Tote Storage
 Upholstered Top on both Tiers, Contrast**



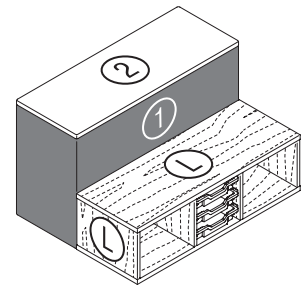
**J. Two Open & Center 3-Tote Storage
 Laminate Top on Upper Tier,
 Upholstered Top on Lower Tier, Non-Contrast**



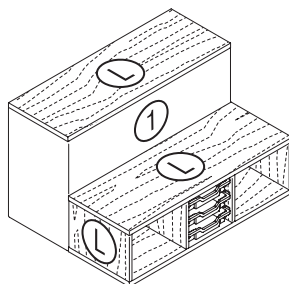
**K. Two Open & Center 3-Tote Storage
 Laminate Top on Upper Tier,
 Upholstered Top on Lower Tier, Contrast**



**L. Two Open & Center 3-Tote Storage
 Upholstered Top on Upper Tier,
 Laminate Top on Lower Tier, Non-Contrast**



**M. Two Open & Center 3-Tote Storage
 Upholstered Top on Upper Tier,
 Laminate Top on Lower Tier, Contrast**



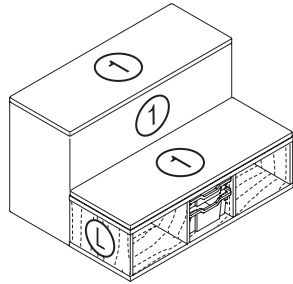
**N. Two Open & Center 3-Tote Storage
 Laminate Top on both Tiers**

Specifying Top & Base Material (cont.)

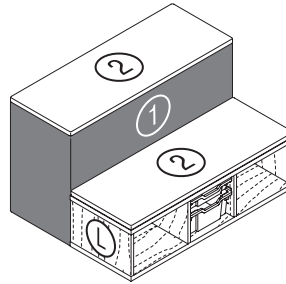
Planning Guidelines

Clamber Two-Tiered Seating with Storage (48" Wide - Straight with 2-Tote Storage) can be specified as:

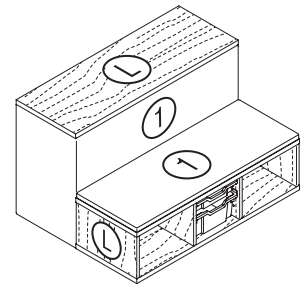
- O. Upholstered Top on Both Tiers, Non-contrast** - One upholstery selection for the upper-tier base and both tier tops. One laminate selection for the lower-tier base. One 3" high tote, and one 6" high tote located in the center cubby of the unit.
- P. Upholstered Top on Both Tiers, Contrast** - Two upholstery selections: Selection one for the upper-tier base and selection two for both tier tops. One laminate selection for the lower-tier base. One 3" high tote, and one 6" high tote located in the center cubby of the unit.
- Q. Laminate Top on Upper Tier, Non-contrast** - One upholstery selection for the upper-tier base and lower-tier top. One laminate selection for the upper-tier top with 74P edge. The lower-tier base laminate will match the top laminate selection. One 3" high tote, and one 6" high tote located in the center cubby of the unit.
- R. Laminate Top on Upper Tier, Contrast** - Two upholstery selections: Selection one for the upper-tier base and selection two for lower-tier top. One laminate selection for the upper-tier top with 74P edge. The lower-tier base laminate will match the top laminate selection. One 3" high tote, and one 6" high tote located in the center cubby of the unit.
- S. Laminate Top on Lower Tier, Non-contrast** - One upholstery selection for the upper-tier base and upper-tier top. One laminate selection for the lower-tier top with 74P edge. The lower-tier base laminate will match the top laminate selection. One 3" high tote, and one 6" high tote located in the center cubby of the unit.
- T. Laminate Top on Lower Tier, Contrast** - Two upholstery selections: Selection one for the upper-tier base and selection two for upper-tier top. One laminate selection for the lower-tier top with 74P edge. The lower-tier base laminate will match the top laminate selection. One 3" high tote, and one 6" high tote located in the center cubby of the unit.
- U. Laminate Top on Both Tiers** - One upholstery selection for the upper-tier base. One laminate selection for both tier tops with 74P edge. The lower-tier base laminate will match the top laminate selection. One 3" high tote, and one 6" high tote located in the center cubby of the unit.



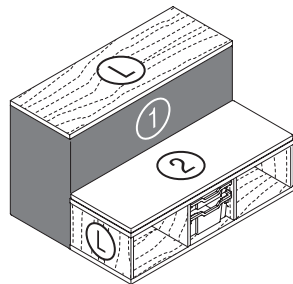
O. Two Open & Center 2-Tote Storage Upholstered Top on both Tiers, Non-Contrast



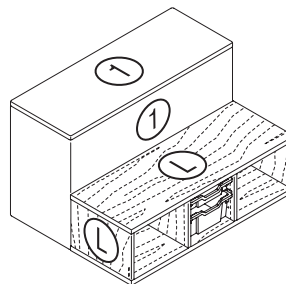
P. Two Open & Center 2-Tote Storage Upholstered Top on both Tiers, Contrast



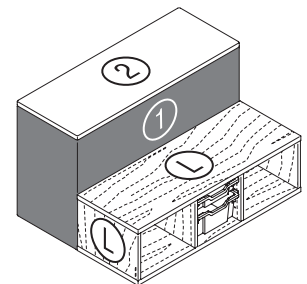
Q. Two Open & Center 2-Tote Storage Laminate Top on Upper Tier, Upholstered Top on Lower Tier, Contrast



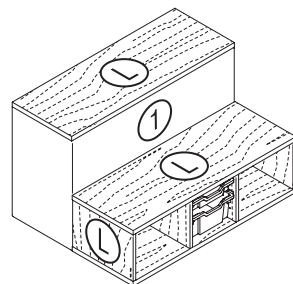
R. Two Open & Center 2-Tote Storage Laminate Top on Upper Tier, Upholstered Top on Lower Tier, Contrast



S. Two Open & Center 2-Tote Storage Upholstered Top on Upper Tier, Laminate Top on Lower Tier, Non-Contrast



T. Two Open & Center 2-Tote Storage Upholstered Top on Upper Tier, Laminate Top on Lower Tier, Contrast

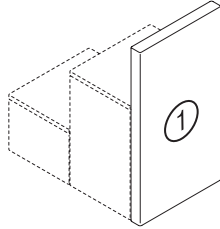


U. Two Open & Center 2-Tote Storage Laminate Top on both Tiers

Specifying Top & Base Material (cont.)

Wall units can be specified as:

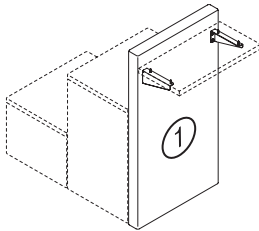
- **Upholstered, Non-contrast** – One upholstery selection for the wall.



**Upholstered,
Non-Contrast**
(wall, 24" wide -
straight shown)

Wall with Worksurface Mount (for laminate worksurface) units can be specified as:

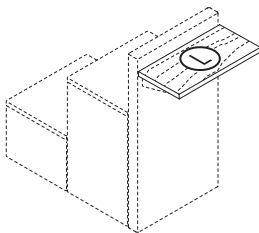
- **Upholstered, Non-contrast, with Worksurface Mount** – One upholstery selection for the wall. Includes worksurface brackets which are Warm Grey only.



**Upholstered,
Non-Contrast**
(wall with worksurface mount,
24" wide - straight
shown)

Laminate Worksurface for Wall with Worksurface Mount units can be specified as:

- **Laminate Worksurface** – Laminate worksurface selection with 74P edge selection.



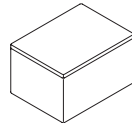
**(laminate worksurface
24" wide - straight
shown)**

Seam Locations

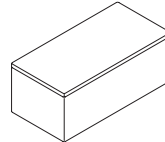
Planning Guidelines

- Upholstery seams are visible at the corners of the base and around the corners and perimeter of the tops. Dotted lines in the illustrations indicate additional seams present on each unit.

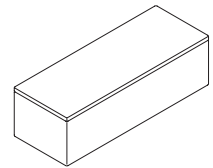
One-Tier Seating



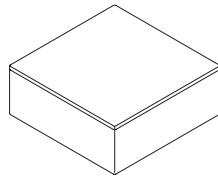
Straight - 24" Wide
CL1R2



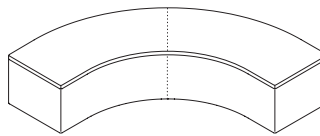
Straight - 36" Wide
CL1R3



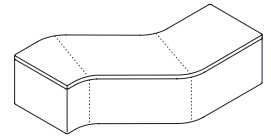
Straight - 48" Wide
CL1R4



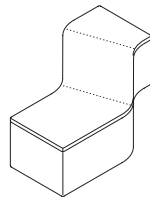
Straight - 36" Wide
CL1SQ



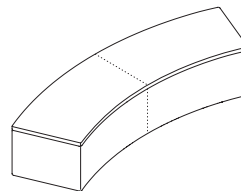
Inside Corner
CL1CN



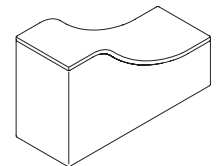
S-Curve - Left
CL1SL



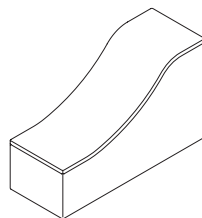
S-Curve - Right
CL1SR



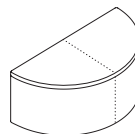
Inside Curve - 45 Degree
CL1VN



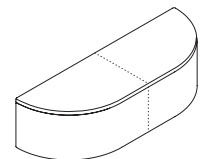
Wave - Left
CL1WL



Wave - Right
CL1WR



Half-Round - 36" Wide
CL1HR



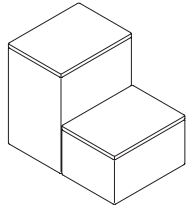
Half-Round - 54" Wide
CL1HV

**Seam Locations
 (cont.)**

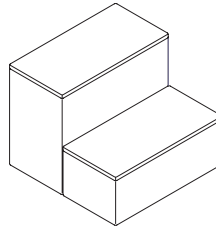
Planning Guidelines

- Upholstery seams are visible at the corners of the base and around the corners and perimeter of the tops. Dotted lines in the illustrations indicate additional seams present on each unit.

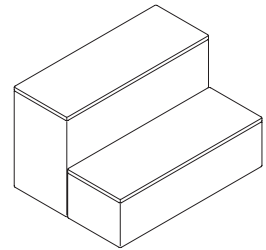
Two-Tiered Seating



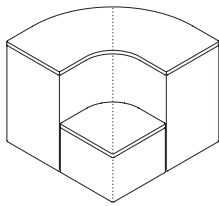
Straight - 24" Wide
 CL2R2



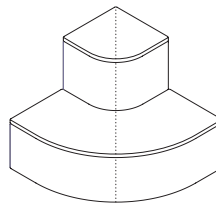
Straight - 36" Wide
 CL2R3



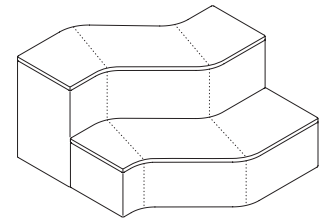
Straight - 48" Wide
 CL2R4



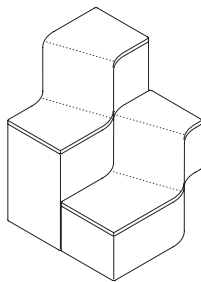
Inside Corner*
 CL2CN



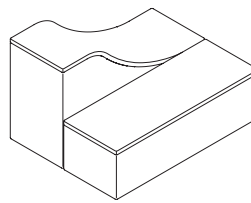
Outside Corner
 CL2CT



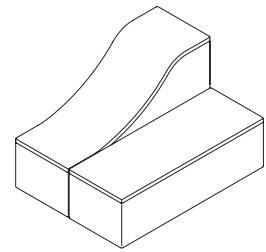
S-Curve - Left
 CL2SL



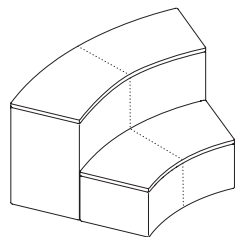
S-Curve - Right
 CL2SR



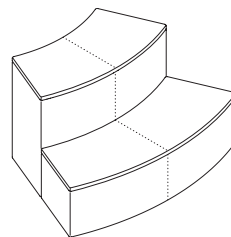
Wave - Left
 CL2WL



Wave - Right
 CL2WR



Inside Curve - 45 Degree
 CL2VN



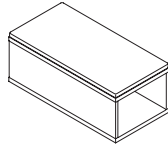
Outside Curve - 45 Degree
 CL2VT

**Seam Locations
(cont.)**

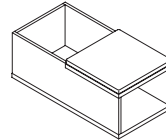
Planning Guidelines

- Upholstery seams are visible at the corners of the base and around the corners and perimeter of the tops. Dotted lines in the illustrations indicate additional seams present on each unit.

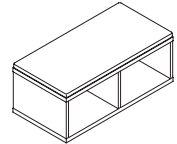
One-Tier Seating with Storage



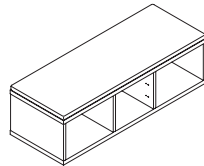
Straight - 18" Wide
CLCR1U



Straight - 18" Wide
CLCR1P1U

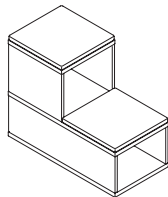


Straight - 36" Wide
CLCR3U

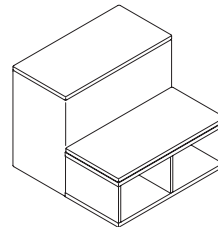


Straight - 48" Wide
CLCR4U

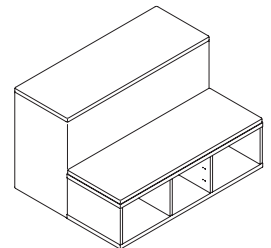
Two-Tier Seating with Storage



Straight - 18" Wide
CLDR1UU



Straight - 36" Wide
CLDR3UU



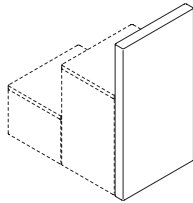
Straight - 48" Wide
CLDR4UU

**Seam Locations
 (cont.)**

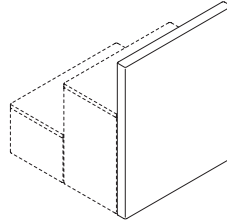
Planning Guidelines

- Upholstery seams are visible at the corners of the base and around the corners and perimeter of the tops. Dotted lines on the wall illustrations indicate additional seams present on each unit.

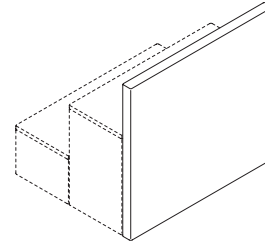
Walls



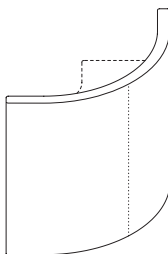
Straight - 24" Wide
 CLWR2N



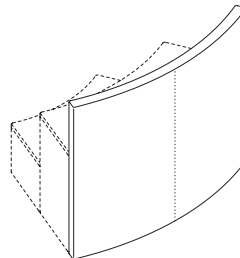
Straight - 36" Wide
 CLWR3N



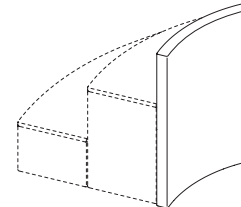
Straight - 48" Wide
 CLWR4N



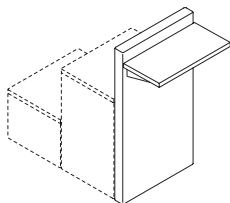
Inside Corner
 CLWCNN



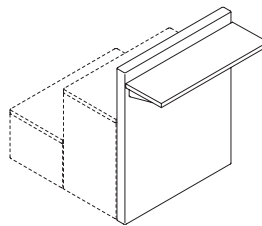
Inside Curve - 45 Degree
 CLWVNN



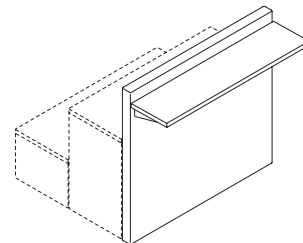
Outside Curve - 45 Degree
 CLWVTN



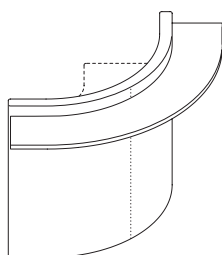
Straight - 24" Wide
 CLSR2N



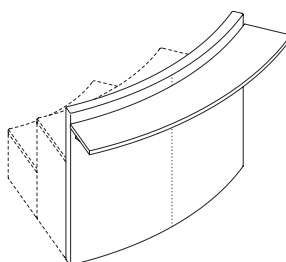
Straight - 36" Wide
 CLSR3N



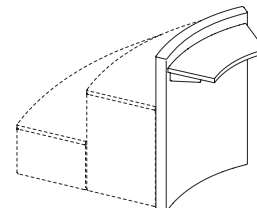
Straight - 48" Wide
 CLSR4N



Inside Corner
 CLSCNN



Inside Curve - 45 Degree
 CLSVNN



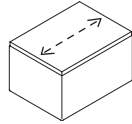
Outside Curve - 45 Degree
 CLSVTN

**Laminate
 Orientation**

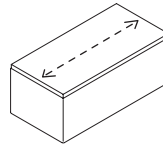
Planning Guidelines

- Laminate tops on Clamber units have specific material direction. Arrows indicate laminate orientation on the tops.

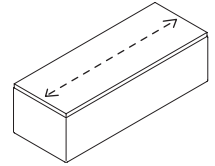
One-Tier Seating



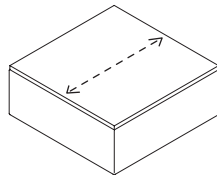
Straight - 24" Wide
 CL1R2



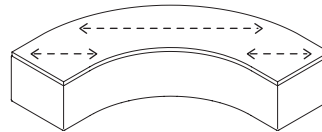
Straight - 36" Wide
 CL1R3



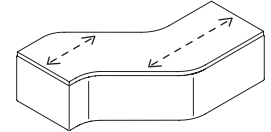
Straight - 48" Wide
 CL1R4



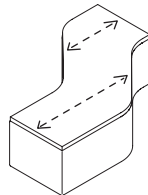
Square - 36" Wide
 CL1SQ



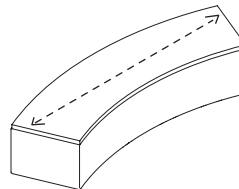
Inside Corner
 CL1CN



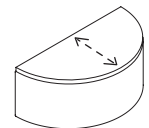
S-Curve - Left
 CL1SL



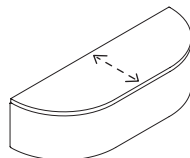
S-Curve - Right
 CL1SR



Inside Curve - 45 Degree
 CL1VN



Half-Round - 36" Wide
 CL1HR



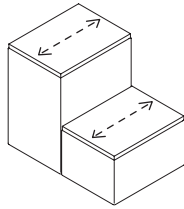
Half Oval - 54" Wide
 CL1HV

**Laminate
 Orientation
 (cont.)**

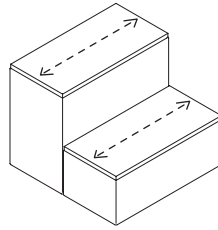
Planning Guidelines

- Laminate tops on Clamber units have specific material direction. Arrows indicate laminate orientation on the tops.

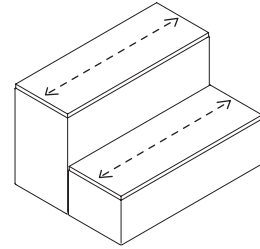
Two-Tiered Seating



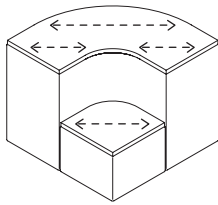
Straight - 24" Wide
 CL2R2



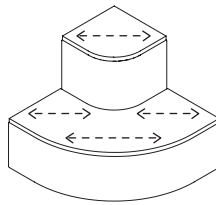
Straight - 36" Wide
 CL3R2



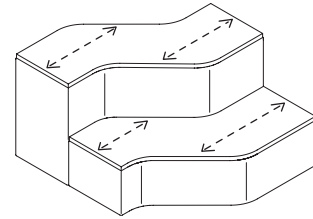
Straight - 48" Wide
 CL2R4



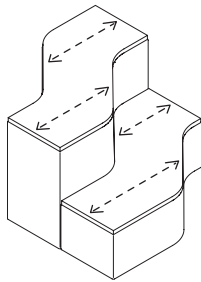
Inside Corner*
 CL2CN



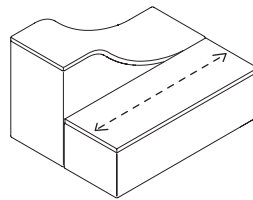
Outside Corner*
 CL2CT



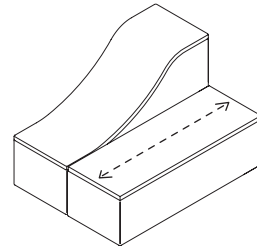
S-Curve - Left
 CL2SL



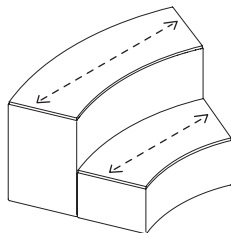
S-Curve - Right
 CL2SR



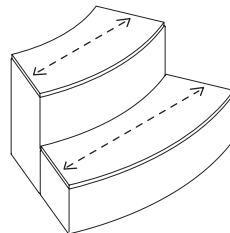
Wave - Left
 CL2WL



Wave - Right
 CL2WR



Inside Curve - 45 Degree
 CL2VN



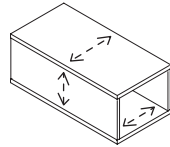
Outside Curve - 45 Degree
 CL2VT

**Laminate
 Orientation
 (cont.)**

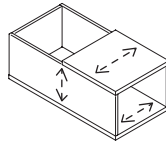
Planning Guidelines

- Laminate tops on Clamber units have specific material direction. Arrows indicate laminate orientation on the tops.

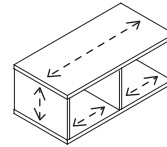
One-Tier Seating with Storage



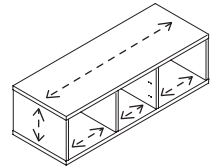
Straight - 18" Wide
 CLCR1L



Straight - 18" Wide
 CLCR1P1L

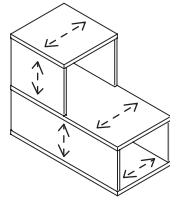


Straight - 36" Wide
 CLCR3L

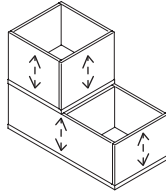


Straight - 48" Wide
 CLCR4L

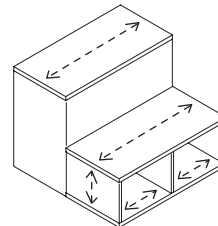
Two-Tier Seating with Storage



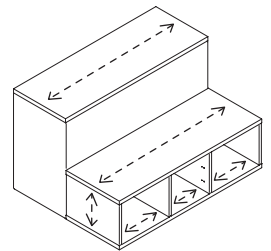
Straight - 18" Wide
 CLDR1LL



Straight - 18" Wide
 CLDR1PP



Straight - 36" Wide
 CLDR3LL



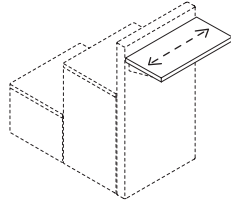
Straight - 48" Wide
 CLDR4LL

**Laminate
Orientation
(cont.)**

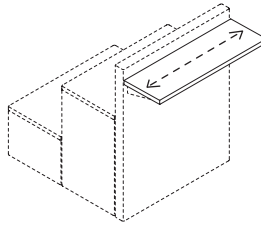
Planning Guidelines

- Laminate worksurfaces on Clamber units have specific material direction. Arrows indicate laminate orientation on the worksurfaces.

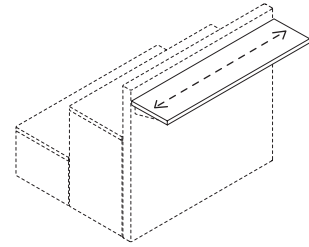
Laminate Worksurfaces



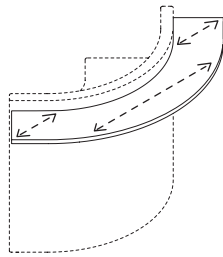
Straight - 24" Wide
CLAWSRT24-74P



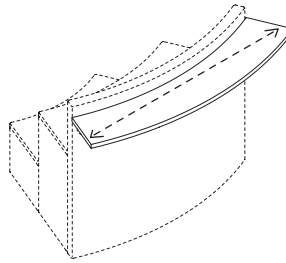
Straight - 36" Wide
CLAWSRT36-74P



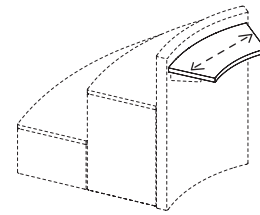
Straight - 48" Wide
CLAWSRT48-74P



Inside Corner
CLAWSCN-74P



Inside Curve - 45 Degree
CLAWSVN-74P



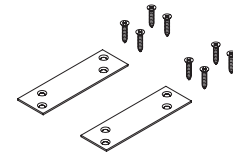
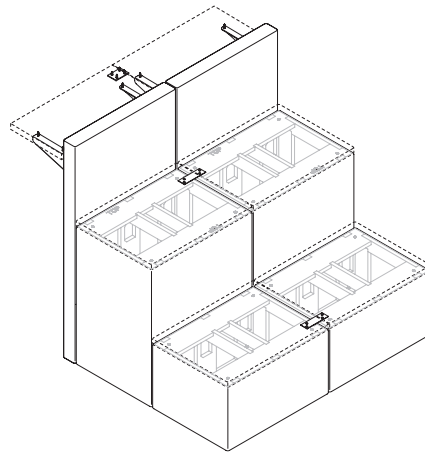
Outside Curve - 45 Degree
CLAWSVT-74P

Ganging Guidelines

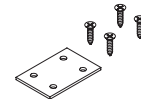
Planning Guidelines

- Each tiered seating ganging plate kit (ordered separately) includes two ganging plates and eight wood screws. Each ganging plate is installed at recommended locations to the upper wood frame of two units to be joined. Ganging plates are black in color and are concealed under installed tier tops. Ganging plate locations are flexible, and up to the customer/installer within guidelines, and are for the most part optional, but use is recommended. In some cases, ganging plate installation is required, and kit(s) will be provided with those units. *The tiered seating ganging plate kit (CLAGKSG) can also be utilized to gang tiered seating with storage with upholstered tops but NOT tiered seating with storage with laminate tops or planter units.
- Each glide ganging kit (ordered separately unless they are required) includes two glide gangers. Each ganger is attached to the glide stems of two units to be joined. One glide ganging kit to be specified for each storage-to-storage, storage-to-lounge, storage-to-planter, planter-to-lounge connection. Gangers are black in color and are concealed under the units. In some cases, gangers are required, and kit(s) will be provided with those units. **The tiered seating glide ganging kit (CLAGKSTG) can be used as an alternative seating ganging method to the above in all instances if the units were ordered and shipped after 03/04/2026.
- Worksurface ganging kits include one ganging plate and four wood screws for each pair of worksurfaces to be joined underneath. No pre-drilled mounting holes exist, so mounting locations are up to customer/installer discretion. Ganging plates are black in color.

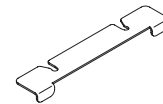
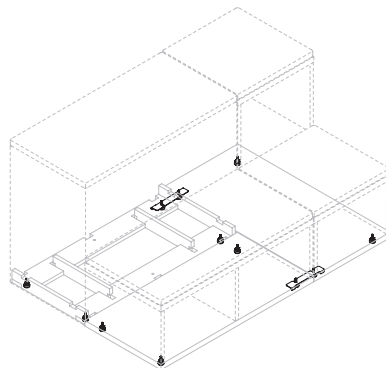
Ganging Kits



***Tiered Seating Ganging Plate Kit (CLAGKSG)**



Worksurface Ganging Kit (CLAGKWG)



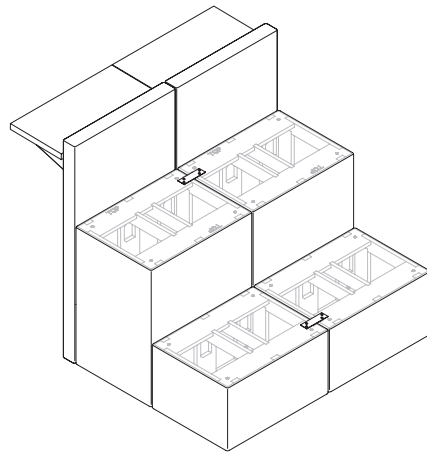
****Tiered Seating Glide Ganging Kit (CLAGKSTG)**

Ganging Guidelines (cont.)

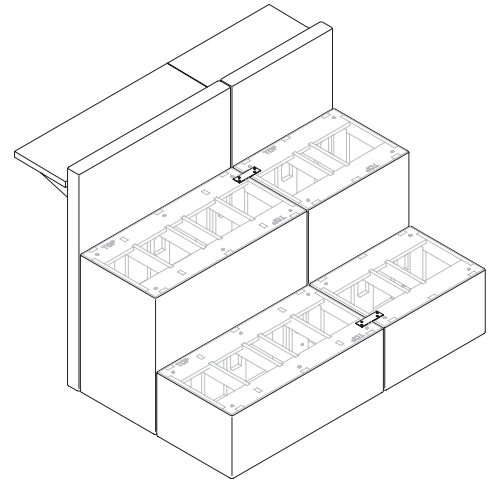
Ganging Requirements

- Tiered seating ganging is generally optional and the ganging kits (Seating: CLAGKSG & Storage/Planters: CLAGKSTG) may be ordered separately. The following guidelines are for when side-by-side tiered seating ganging is required to ensure stability:
 - Any two-tiered seating, 18"W, straight storage or planter unit must be ganged to another two-tiered seating unit, side-by-side, to ensure stability. Each unit includes required storage ganging kit (CLAGKSTG).
 - Models:

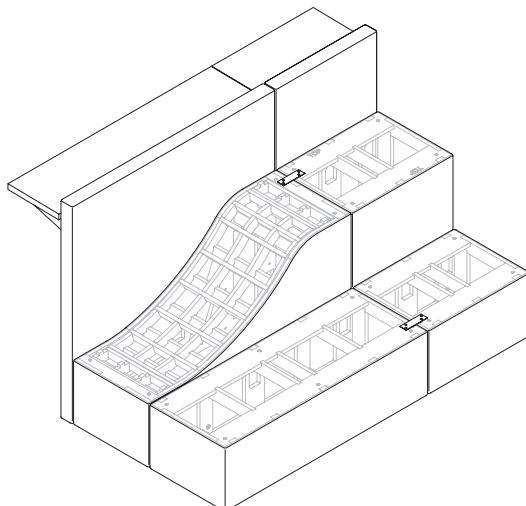
• CLDR1UU	• CLDR1LU	• CLDR1LP	• CLDR1PP
• CLDR1UL	• CLDR1LL	• CLDR1UP	
 - When assembled, a two-tiered seating straight - 24" wide (CL2R2) and wall with worksurface mount (CLSR2) must be ganged together to another two-tiered seating unit, side by side, to ensure stability. Each wall with worksurface mount - straight - 24" wide includes required ganging kit.
 - When assembled, a two-tiered straight - 36" wide (CL2R3) and wall with worksurface mount (CLSR3) must be ganged together to another two-tiered seating unit, side by side, to ensure stability. Each wall with worksurface mount - straight - 36" wide includes required ganging kit.
 - When assembled, a two-tiered wave - left or - right (CL2WL or CL2WR) and wall with worksurface mount (CLSR4) must be ganged together to another two-tiered seating unit, side by side, to ensure stability. Each wall with worksurface mount - straight - 48" wide includes required ganging kit.
 - When a two tiered, 48" wide straight unit has a wall with worksurface attached, there is no ganging requirement. Ganging is only a requirement on a two-tiered wave (left or right) unit if a wall with worksurface is installed.
- With the exception of the units listed above that require ganging, all other units may be freestanding, but ganging is recommended.



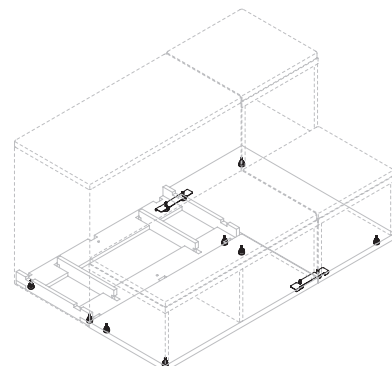
Two-Tiered Straight - 24" Wide with Wall with Worksurface Mount - Straight - 24" Wide



Two-Tiered Straight - 36" Wide with Wall with Worksurface Mount - Straight - 36" Wide



Two-Tiered Wave - Left or Right and Wall with Worksurface Mount - Straight - 48" Wide



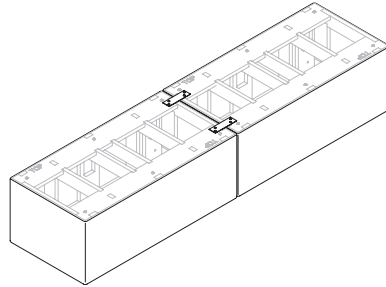
Two-Tiered Storage - Straight - 18" Wide

Ganging Guidelines (cont.)

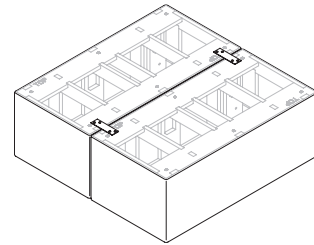
Ganging Location Recommendations

- Install two ganging plates to the upper wood frame of two units to be joined together. No pre-drilled mounting holes exist, so mounting locations are up to customer/installer discretion.

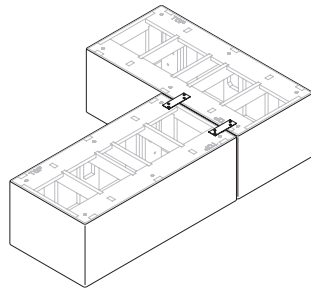
One-Tier Seating Side-to-Side Ganging Recommendations



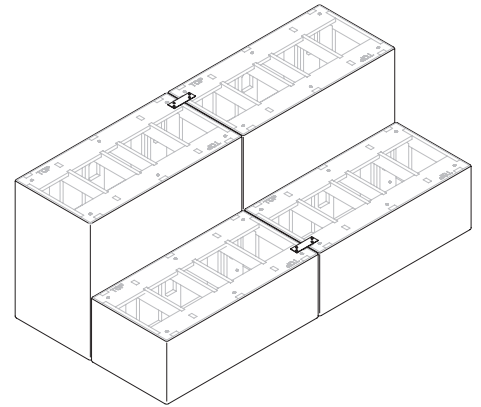
One-Tier Seating Back-to-Back Ganging Recommendations



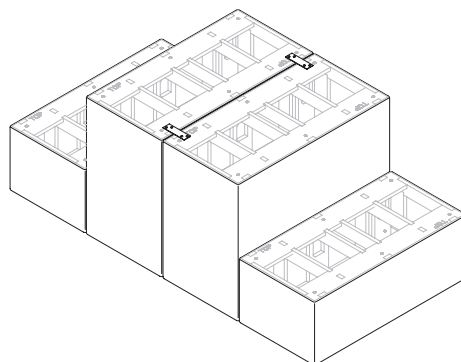
One-Tier Seating Back-to-Side Ganging Recommendations



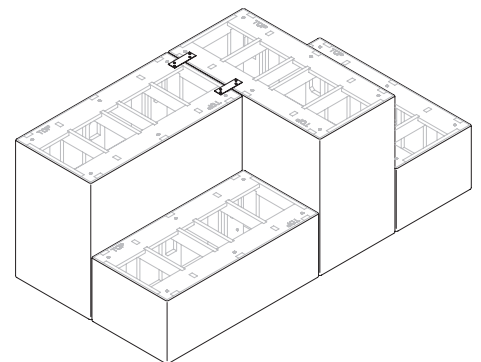
Two-Tiered Seating Side-to-Side Ganging Recommendations



Two-Tiered Seating Back-to-Back Ganging Recommendations



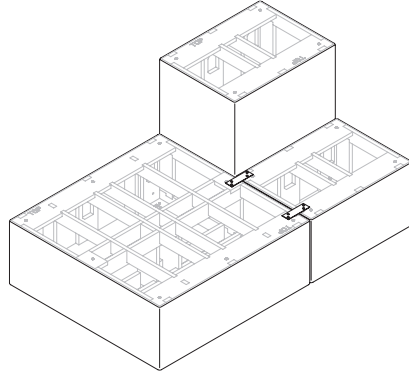
Two-Tiered Seating Side-to-Back Ganging Recommendations



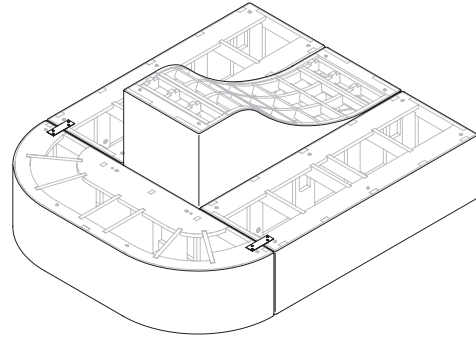
Ganging Guidelines (cont.)

Ganging Location Recommendations (cont.)

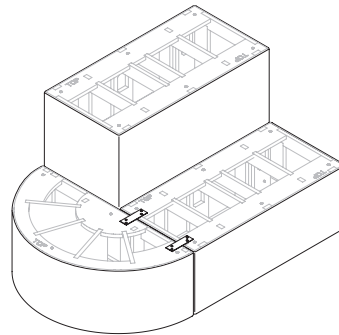
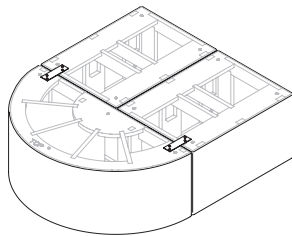
One-Tier Seating Side-to-Side of Two-Tiered Ganging Recommendations



One-Tier Seating Half-Oval Ganging Recommendations



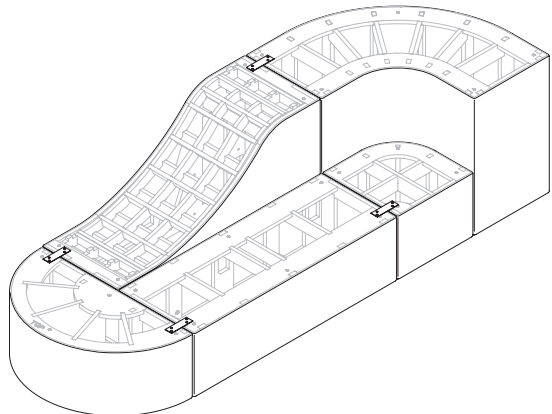
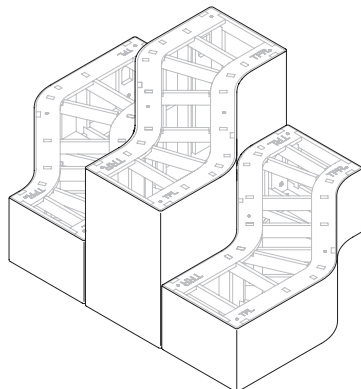
One-Tier Seating Half-Round Ganging Recommendations



One-Tier Seating S-Curve to the Back of Two-Tiered Seating S-Curve Ganging Recommendations:

CANNOT BE GANGED. They will be free floating from the two-tiered units at their backs. A Product Modification Request (PMR) is required to permanently mount a one tier unit to the back of a two-tiered unit.

Two-Tiered Seating Wave Ganging Recommendations

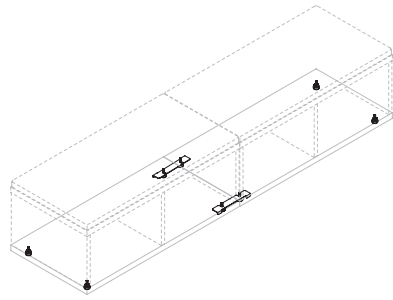


**Ganging
Guidelines
(cont.)**

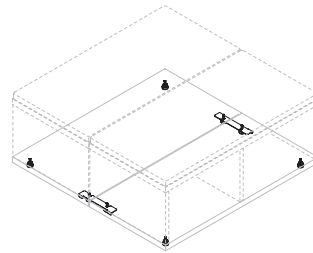
Ganging Location Recommendations (cont.)

- Each bracket is designed with a pair of slots which capture a glide stem of each unit being joined. Press one bracket slot onto the first unit glide stem, then rotate the bracket and engage the second glide stem of the adjoining unit, securing both units together.

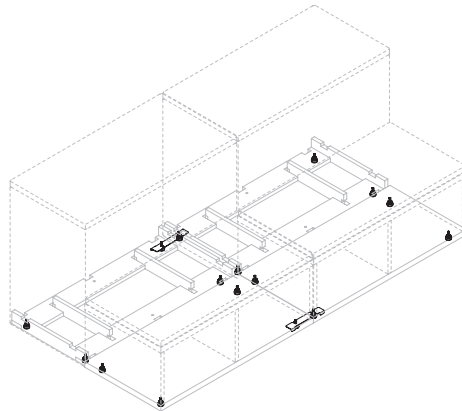
**One-Tier Seating with Storage Side-to-Side
Ganging Recommendations**



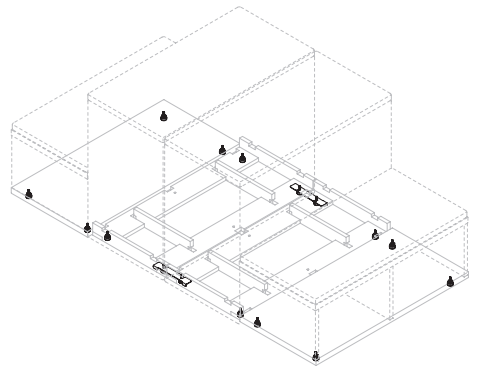
**One-Tier Seating with Storage Back-to-Back
Ganging Recommendations**



**Two-Tiered Seating with Storage Side-to-Side
Ganging Recommendations**



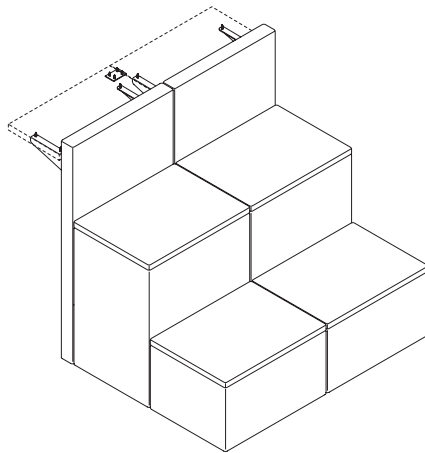
**Two-Tiered Seating with Storage Back-to-Back
Ganging Recommendations**



**Gangling
Guidelines
(cont.)**

Clamber Wall with Worksurface Gangling

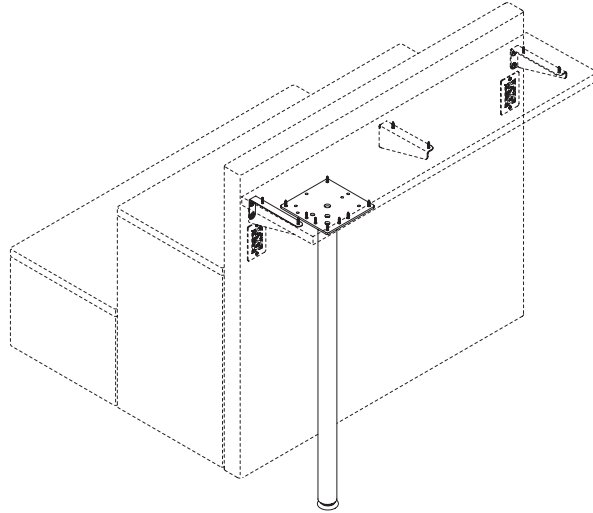
- Worksurface-to-worksurface gangling is recommended to hold side-by-side planned worksurfaces together and keep them level to each other.
- Worksurface gangling kits (CLAGKWG) are ordered separately.
- Worksurface gangling kits include one gangling plate and four wood screws for each pair of worksurfaces to be joined underneath near the front of the worksurfaces. No pre-drilled holes exist, so mounting location is up to customer/installer discretion. Gangling plates are black in color.



Worksurface Leg Kit

Planning Guidelines

- Wall worksurface leg kits are available and ordered separately as desired. Leg kits can be specified to better accommodate the visually impaired, or based on customer preference. Each kit contains one post leg, one L-bracket and connection hardware. The L-bracket is an optional replacement for the standard cantilever bracket to maintain a clean aesthetic. L-bracket is available in Warm Grey only. See Product Color Options in the Clamber Tiered Seating pricelist for post leg color options.

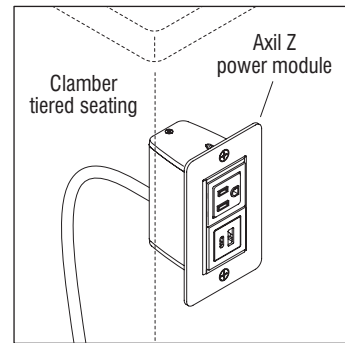
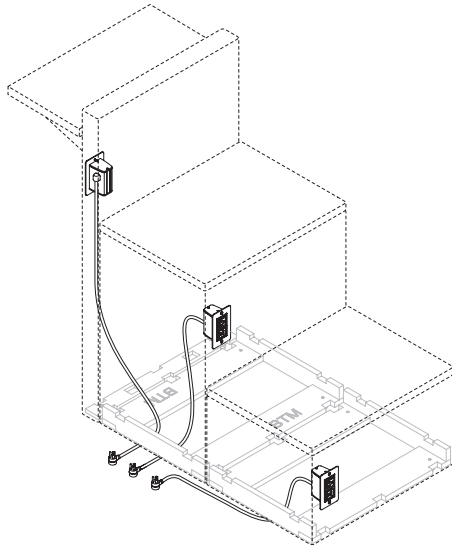


ELECTRICAL

Planning Guidelines

Power Modules

- Optional power includes the Axil Z power module with 3-prong plug. The power module houses one AC simplex receptacle (rated at 15 amps/125 volts), one USB-A port and one USB-C port (rated at 2.1 amps/5 volts).
- Cords are 120" (10 ft) long and only in black.
- The 3-prong plug is oriented 90 degrees off the power cord.
- Module colors available are Warm Grey, Cool Grey, White and Black, in matte finishes.



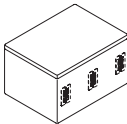
Axil Z Power Module

Power Module Locations

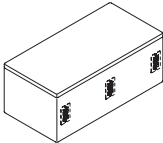
Planning Guidelines

One-Tier Seating - (straight, square, s-curve & wave)

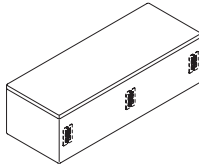
One-tier seating straight - 24" wide (CL1R2), straight - 36" wide (CL1R3), straight - 48" wide (CL1R4), square - 36" wide (CL1SQ), S-curve - left (CL1SL), S-curve - right (CL1SR), Wave - left (CL1WL), and Wave - right (CL1WR) units can accommodate one Axil Z power module at one of three locations when specified: left- (LFP), center- (CFP), and right-facing (RFP).



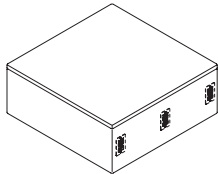
Straight - 24" Wide
CL1R2



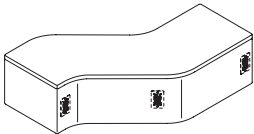
Straight - 36" Wide
CL1R3



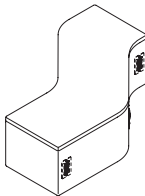
Straight - 48" Wide
CL1R4



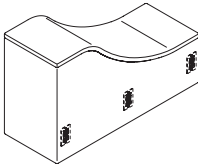
Square - 36" Wide
CL1SQ



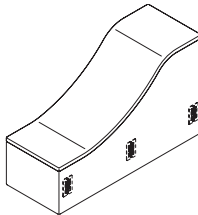
S-Curve - Left
CL1SL



S-Curve - Right
CL1SR



Wave - Left
CL1WL

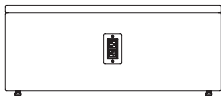


Wave - Right
CL1WR

CL1R2, CL1R3, CL1R4, CL1SQ, CL1SL, CL1SR, CL1WL & CL1WR Power Module Locations



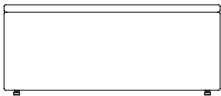
Left-Facing Front Power (LFP)



Center-Facing Front Power (CFP)



Right-Facing Front Power (RFP)



No Power Module

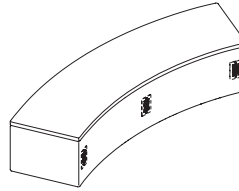
(front view) (CL1R3 shown)

Power Module Locations (cont.)

Planning Guidelines

One-Tier Seating - (inside curve - 45 degree)

Inside Curve - 45 degree (CL1VN) units can accommodate one Axil Z power module at one of six locations when specified: outside curve left- (OLFP), outside curve center- (OCFP), outside curve right- (RFP), inside curve left- (ILFP), inside curve center (ICFP), and inside curve right-facing (IRFP).

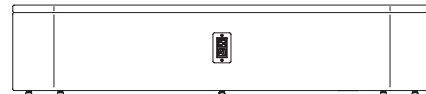


**Inside Curve - 45 Degree
 CL1VN**

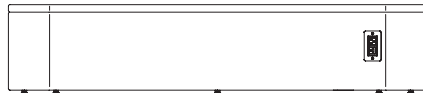
CL1VN Power Module Locations



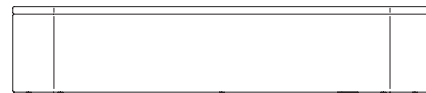
Inside Curve Left-Facing Power (ILFP)



Inside Curve Center-Facing Power (ICFP)



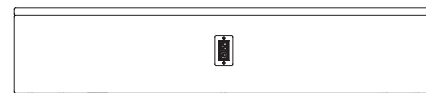
Inside Curve Right-Facing Power (IRFP)



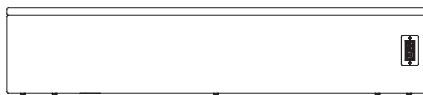
No Power Module



Outside Curve Left-Facing Power (OLFP)



Outside Curve Center-Facing Power (OCFP)



Outside Curve Right-Facing Power (ORFP)

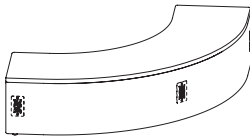
(front view) (CL1VN shown)

Power Module Locations (cont.)

Planning Guidelines

One-Tier Seating - (inside corner)

Inside corner (CL1CN) units can accommodate one Axil Z power module at one of three locations when specified: outside curve left- (OLFP), outside curve center- (OCFP), and outside curve right-facing (RFP).

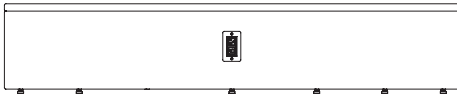


**Inside Corner
 CL1CN**

CL1CN Power Module Locations



Outside Curve Left-Facing Power (OLFP)



Outside Curve Center-Facing Power (OCFP)



Outside Curve Right-Facing Power (ORFP)

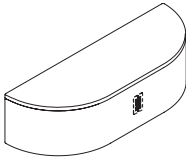


No Power Module

(front view) (CL1CN shown)

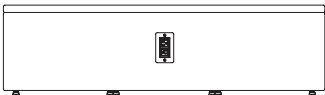
One-Tier Seating - (half-oval)

Half-oval (CL1HV) units can accommodate one center-facing (CFP) Mini-Tap power module when specified.



**Half Oval - 54" Wide
 CL1HVU**

CL1HV Power Module Locations



Center-Facing Power (CFP)



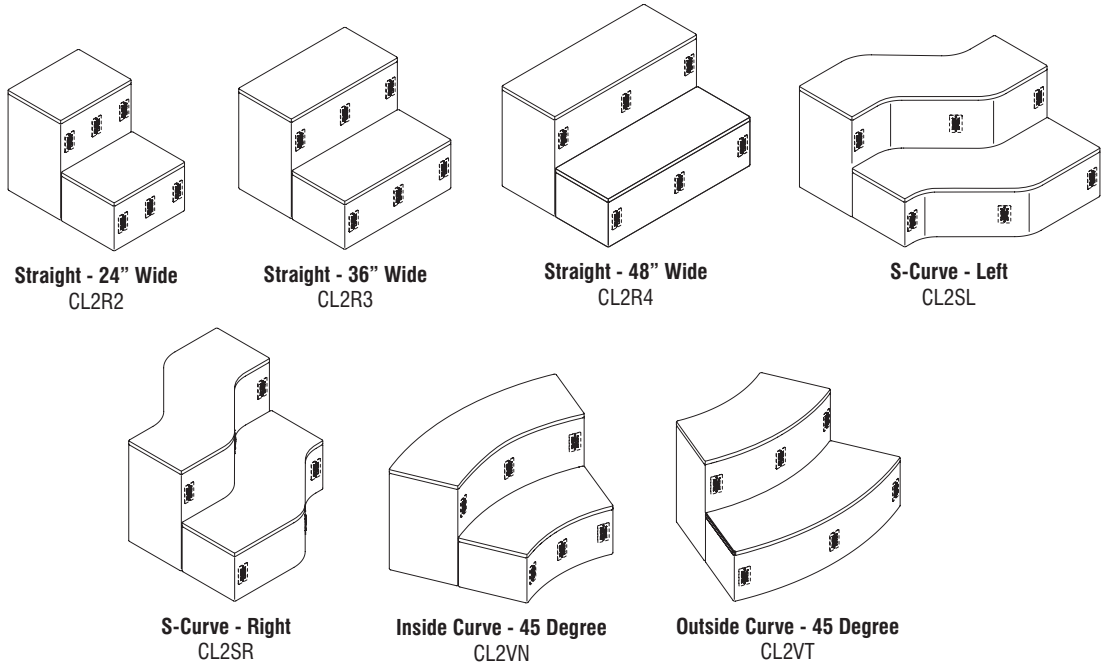
No Power Module

(front view) (CL1HV shown)

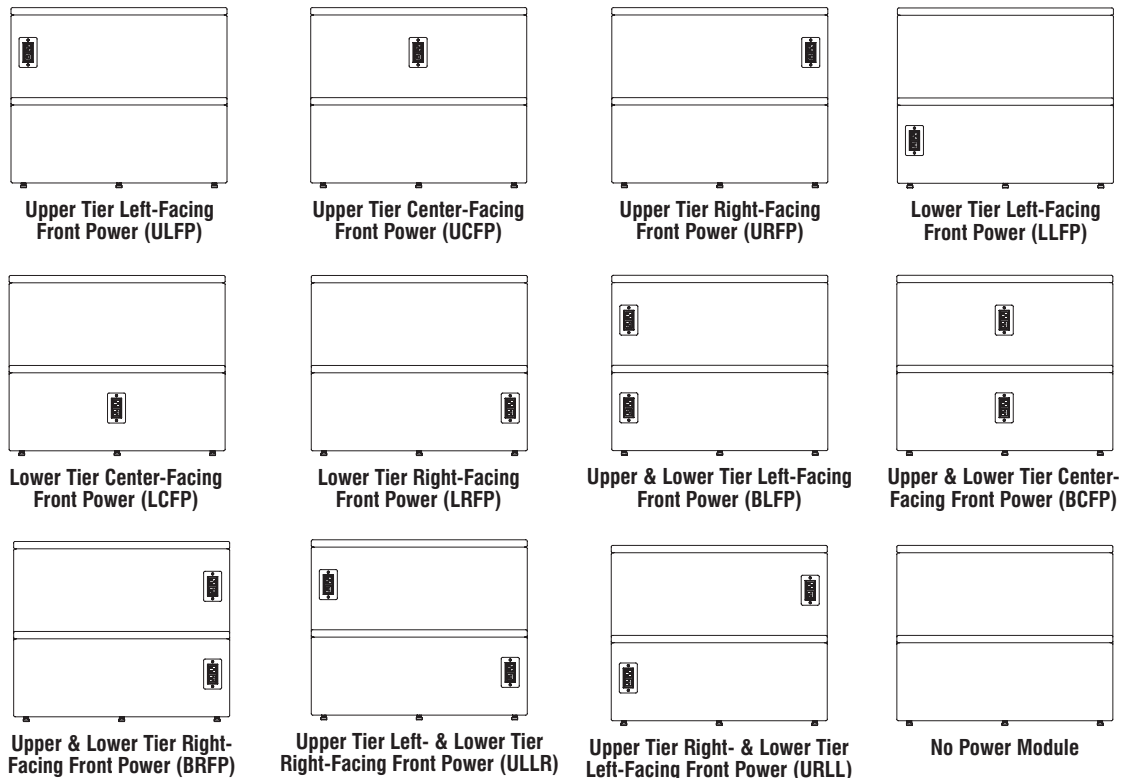
Power Module Locations (cont.)

Two-Tiered Seating - (straight, s-curve, inside curve 45 degree, & outside curve - 45 degree)

Straight, s-curve, inside curve - 45 degree, and outside curve - 45 degree units can accommodate one or two Axil Z power module(s) at one of eleven locations when specified: upper tier left- (ULFP), upper tier center- (UCFP), upper tier right- (URFP), lower tier left- (LLFP), lower tier center- (LCFP), lower tier right- (LRFP), upper & lower tier left- (BLFP), upper & lower tier center- (BCFP), upper & lower tier right- (BRFP), upper tier left- & lower tier right- (LRFP), upper tier right- & lower tier left-facing (RLFP). Units with a power module on the upper and lower tier will have two power cords with 3-prong plug.



CL2R2, CL2R3, CL2R4, CL2SL, CL2SR, CL2VN, & CL2VT Power Module Locations



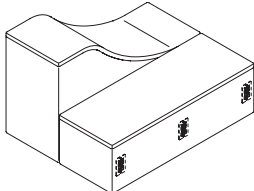
(front view) (CL2R3 shown)

Power Module Locations (cont.)

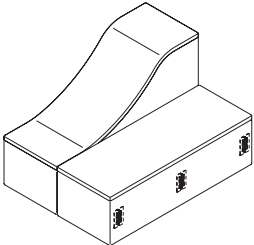
Planning Guidelines

Two-Tiered Seating - (wave)

Wave - Left (CL2WL) and Wave - Right (CL2WR) units can accommodate one Axil Z power module at one of three locations when specified: lower tier left- (LLFP), lower tier center- (LCFP), and lower tier right-facing (LRFP).

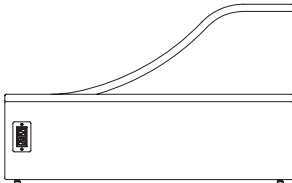


**Wave - Left
 CL2WL**

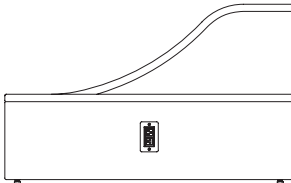


**Wave - Right
 CL2WR**

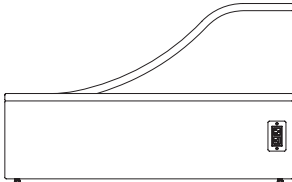
CL2WL & CL2WR Power Module Locations



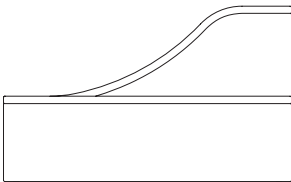
Lower Tier Left-Facing Front Power (LLFP)



Lower Tier Center-Facing Front Power (LCFP)



Lower Tier Right-Facing Front Power (LRFP)



No Power Module

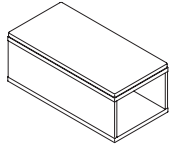
(front view) (CL2WL shown)

**Power Module
Locations (cont.)**

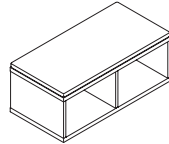
Planning Guidelines

One-Tier Seating with Storage - (straight)

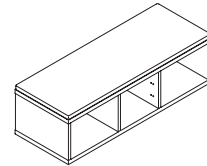
Axil Z power modules are not available on one-tier seating with storage straight - 18" wide (CLCR1), straight - 36" wide (CLCR3), and straight - 48" wide (CLCR4) units.



Straight - 18" Wide
CLCR1

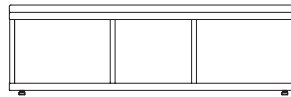


Straight - 36" Wide
CLCR3



Straight - 48" Wide
CLCR4

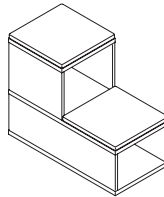
CLCR1, CLCR3, CLCR4 Power Module Locations



No Power Module

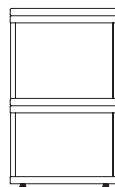
Two-Tiered Seating with Storage - (straight)

Axil Z power modules are not available on two-tiered seating with storage straight - 18" wide (CLDR1) units.



Straight - 18" Wide
CLDR1

CLDR1 Power Module Locations



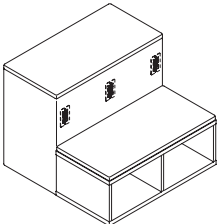
No Power Module

Power Module Locations (cont.)

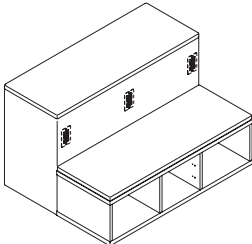
Planning Guidelines

Two-Tiered Seating with Storage - (straight)

Straight - 36" wide (CLDR3) and straight - 48" wide (CLDR4) units can accommodate one Axil Z power module at one of three locations when specified: upper tier left- (ULFP), upper tier center- (UCFP), or upper tier right- (URFP).

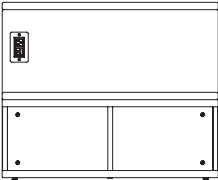


Straight - 36" Wide
CLDR3

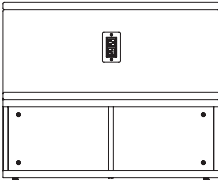


Straight - 48" Wide
CLDR4

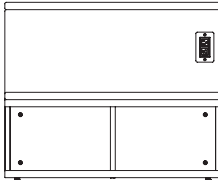
CL2R2, CL2R3, CL2R4, CL2SL, CL2SR, CL2VN, & CL2VT Power Module Locations



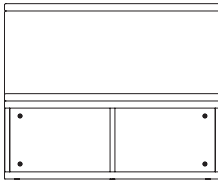
Upper Tier Left-Facing Front Power (ULFP)



Upper Tier Center-Facing Front Power (UCFP)



Upper Tier Right-Facing Front Power (URFP)

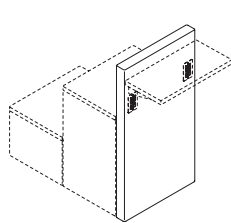


No Power Module

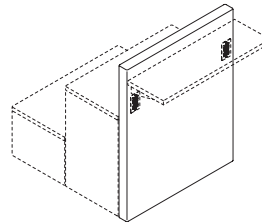
Power Module Locations (cont.)

Wall (with worksurface)

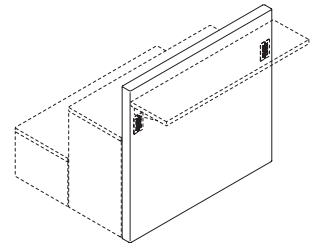
Straight - 24" Wide (CLSR2), Straight - 36" Wide (CLSR3), Straight - 48" Wide (CLSR4), Inside Curve (CLSCN, Inside Curve - 45 Degree (CLSVN), and Outside Curve - 45 Degree (CLSVT) units can accommodate one Axil Z power module at one of two locations when specified: left- (LFP), and right-facing (RFP).



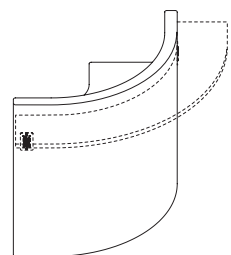
Straight - 24" Wide
CLSR2



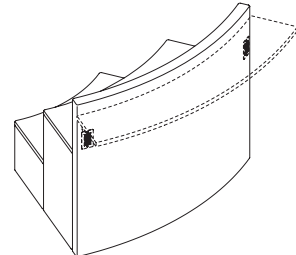
Straight - 36" Wide
CLSR3



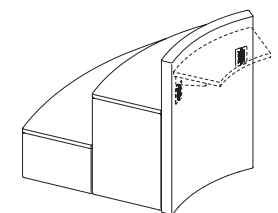
Straight - 48" Wide
CLSR4



Inside Corner
CLSCN

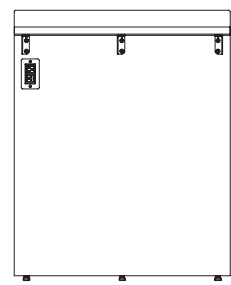


Inside Curve - 45 Degree
CLSVN

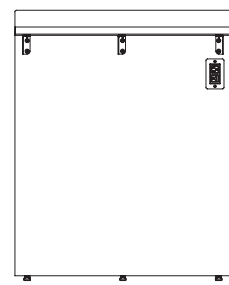


Outside Curve - 45 Degree
CLSVT

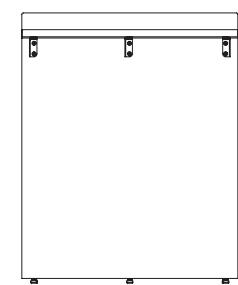
CLSR2, CLSR3, CLSR4, CLSCN, CLSVN, & CLSVT Power Module Locations



Left-Facing Back Power (LFP)



Right-Facing Back Power (RFP)



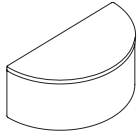
No Power Module

(back view) (CLSR3 shown)

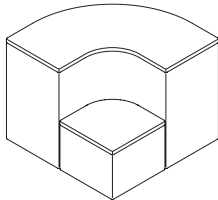
Power Module Locations (cont.)

No Power Module

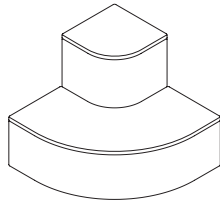
One Tier half-round (CL1HR), two-tiered inside corner (CL2CN), two-tiered outside corner (CL2CN), wall straight - 24" wide with no worksurface (CLWCNN), wall straight - 36" wide with no worksurface, wall straight - 48" wide with no worksurface, wall inside corner with no worksurface (CLWCNN), wall inside curve - 45 degree with no worksurface (CLWVNN), and wall outside curve - 45 degree with no worksurface (CLWVTN) units are not available with Axil Z power modules.



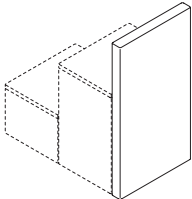
Half-Round - 36" Wide
CL1HR



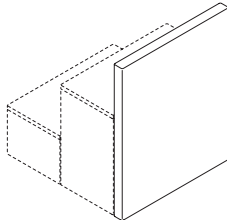
Inside Corner
CL2CN



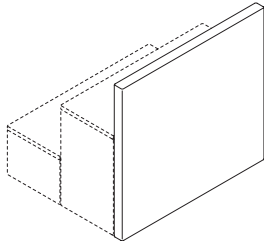
Outside Corner
CL2CT



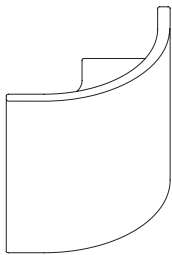
Straight - 24" Wide with No Worksurface
CLWR2N



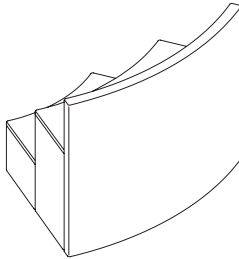
Straight - 36" Wide with No Worksurface
CLWR3N



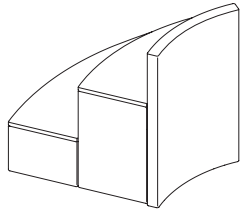
Straight - 48" Wide with No Worksurface
CLWR4N



Inside Corner with No Worksurface
CLWCNN

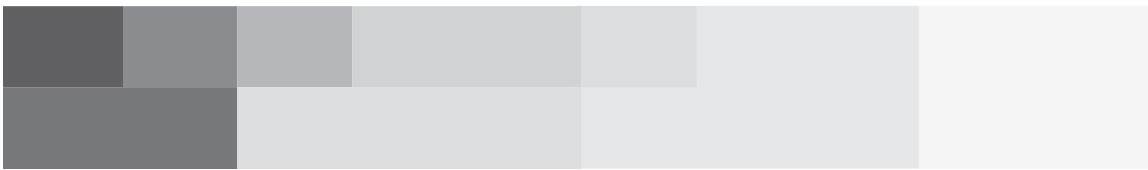


Inside Curve - 45 Degree with No Worksurface
CLWVNN



Outside Curve - 45 Degree with No Worksurface
CLWVTN

**CL1HR, CL2CN, CL2CN, CLWR2N, CLWR3N, CLWR4N, CLWCNN, CLWVNN, & CLWVTN
 Not Available with Power Module**



Furnishing Knowledge®